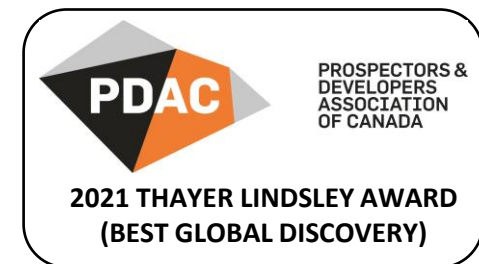


K92

MINING INC.

Growing Production & Transformative Discoveries

INVESTOR PRESENTATION • May 2025



Forward-Looking and Cautionary Statements

This Presentation is being provided for information purposes only and does not constitute or form part of, and should not be construed as, an offer or invitation to sell or any solicitation of any offer to purchase or subscribe for any securities of K92 Mining Inc. (the “Company” or “K92”) in Canada, the United States or any other jurisdiction. Trading in the securities of the Company should be considered highly speculative.

CAUTIONARY STATEMENT REGARDING FORWARD LOOKING INFORMATION

Certain statements, beliefs and opinions in this presentation, including any information relating to K92’s future financial or operating performance contained in text, graphs, tables and charts are “forward looking” under applicable Canadian legislation, which reflect the Company’s current expectations and projections about future events. Forward-looking statements are generally identified by the use of terminology such as “plans”, “expects”, “is expected”, “budget”, “scheduled”, “targeted”, “estimates”, “forecasts”, “intends”, “anticipates”, “projects”, “potential”, “believes” or variations of such words and phrases or statements that certain actions, events or results “may”, “could”, “would”, “should”, “might” or “will be taken”, “occur” or “be achieved” or the negative connotation of such terms.

Forward-looking statements are based on estimates and assumptions as of the date of this presentation regarding K92’s future financial or operating performance that, while considered reasonable, are subject to known and unknown risks, uncertainties, and other factors which may cause the actual results and future events to differ materially from those expressed or implied and which are beyond the Company’s ability to control or predict. Forward-looking statements contained in this presentation regarding past trends or activities should not be taken as a representation that such trends or activities will continue in the future and are not guarantees of future performance. All statements regarding: the definitive feasibility study (DFS) of the Kainantu Gold Mine; the Stage 3 Expansion and Stage 4 Expansion; expectations of future cash flows; expectations of future production results; expected success of the proposed plant expansions; the generation of further drilling results; potential expansion of resources or reserves are forward-looking and may or may not occur. Information contained herein is based on certain factors and assumptions including: there being no significant disruptions affecting the Company’s operations; political and legal developments in Papua New Guinea being consistent with the Company’s current expectations; the accuracy of K92’s mineral reserve and mineral resource estimates; exchange rates between the Canadian dollar, U.S. dollar, and the Papua New Guinea Kina being consistent with current levels; prices for key supplies being consistent with expected levels; equipment, labor and materials costs increasing on a basis consistent with K92’s expectations; all required permits, licenses and authorizations being obtained from the relevant governments and other relevant stakeholders within the expected timelines and the absence of material negative comments during the applicable regulatory processes; the market price of the Company’s securities; metal price; taxation; the estimation, timing and amount of future exploration and development; capital and operating costs; the availability of financing; the receipt of necessary regulatory approvals; environmental risks; title disputes; failure of plant, equipment or processes to operate as anticipated; accidents; labor disputes; claims and limitations on insurance coverage and other risks of the mining industry. In addition, there are risks and hazards associated with the business of mineral exploration, development and mining, including environmental events and hazards, industrial accidents, unusual or unexpected formations, pressures, cave-ins, and flooding and gold bullion losses, and the risk of inadequate insurance or inability to obtain insurance to cover these risks. Risks and certain other material assumptions regarding such forward-looking statements are discussed in K92’s annual information form, annual management’s discussion and analysis (“MD&A”), and annual financial statements filed on SEDAR+ at www.sedarplus.ca.

Accordingly, all of the forward-looking statements contained herein are qualified by these cautionary statements. K92 expressly disclaims any intention or obligation to update or revise any forward-looking statements whether as a result of new information, events or otherwise, except in accordance with applicable securities laws. No person should place undue reliance on forward-looking statements, which speak only as of the date of this presentation.

NON-IFRS MEASURES

This presentation includes certain terms or performance measures commonly used in the mining industry that are not defined under International Financial Reporting Standards (“IFRS”), including “cash operating costs”, “earnings before interest, taxes, depreciation and amortization” (“EBITDA”), and “all-in sustaining costs” (“AISC”). Non-IFRS measures do not have any standardized meaning prescribed under IFRS, and therefore they may not be comparable to similar measures employed by other companies. The data presented is intended to provide additional information and should not be considered in isolation or as a substitute for measures of performance prepared in accordance with IFRS and should be read in conjunction with K92’s consolidated financial statements. Readers should refer to K92’s MD&A under the heading “Non-IFRS Performance Measures”, available on SEDAR+ and K92’s website, for a more detailed discussion of how the Company calculates such measures and a reconciliation of certain measures to IFRS terms.

CAUTIONARY NOTE TO U.S. READERS CONCERNING ESTIMATES OF MINERAL RESERVES AND MINERAL RESOURCES

Information concerning the properties and operations of K92 has been prepared in accordance with Canadian standards under applicable Canadian securities laws and may not be comparable to similar information for United States companies. The terms “Mineral Resource”, “Measured Mineral Resource”, “Indicated Mineral Resource” and “Inferred Mineral Resource” used in this presentation are Canadian mining terms as defined in the Definition Standards for Mineral Resources and Mineral Reserves adopted by the Canadian Institute of Mining, Metallurgy and Petroleum (“CIM Definition Standards”), and incorporated by reference in National Instrument 43-101 – Standards of Disclosure for Mineral Projects (“NI 43-101”).

The SEC amended the disclosure requirements and policies for mining properties (“SEC Modernization Rules”) to more closely align with current industry and global regulatory practices and standards, and became effective in 2019, with compliance required for the first fiscal year beginning on or after January 1, 2021. We have replaced the historical property disclosure requirements for mining registrants that were included in SEC Industry Guide 7. The SEC now recognizes estimates of “measured mineral resources”, “indicated mineral resources” and “inferred mineral resources”. In addition, the SEC has amended its definitions of “proven mineral reserves” and “probable mineral reserves” to be substantially similar to the corresponding definitions under the CIM Definition Standards. While the SEC Modernization Rules are “substantially similar” to the CIM Definition Standards, readers are cautioned that there are differences between the SEC Modernization Rules and the CIM Definitions Standards. Accordingly, there is no assurance any mineral reserves or mineral resources that the Company may report as “proven mineral reserves”, “probable mineral reserves”, “measured mineral resources”, “indicated mineral resources” and “inferred mineral resources” under NI 43-101 would be the same had the Company prepared the reserve and resource estimates under the standards adopted under the SEC Modernization Rules.

United States investors are also cautioned that while the SEC now recognizes “indicated mineral resources” and “inferred mineral resources”, investors should not assume that any part or all of the mineralization in these categories will ever be converted into a higher category of mineral resources or into mineral reserves. Mineralization described using these terms has a greater amount of uncertainty as to their existence and feasibility than mineralization that has been characterized as reserves. Accordingly, investors are cautioned not to assume that any “indicated mineral resources” or “inferred mineral resources” that the Company reports are or will be economically or legally mineable. Further, “inferred mineral resources” have a greater amount of uncertainty as to their existence and as to whether they can be mined legally or economically. Therefore, United States investors are also cautioned not to assume that all or any part of the “inferred mineral resources” exist. In accordance with Canadian securities laws, estimates of “inferred mineral resources” cannot form the basis of feasibility or other economic studies, except in limited circumstances where permitted under NI 43-101.

The mineral reserve and mineral resource data set out in this presentation are estimates, and no assurance can be given that the anticipated tonnages and grades will be achieved or that the indicated level of recovery will be realized. The Company does not include equivalent gold ounces for by-product metals contained in mineral reserves in its calculation of contained ounces and mineral reserves are not reported as a subset of mineral resources.

QUALIFIED PERSON: The scientific and technical information contained herein has been reviewed and approved by Mr. Andrew Kohler, PGeo, K92’s Mine Geology Manager and Mine Exploration Manager, and a Qualified Person as defined by NI 43-101.

NI 43-101 – NI 43-101 – the Updated Definitive Feasibility (“Updated DFS”) that includes the DFS and previous resource estimates is included in a technical report titled, “Independent Technical Report, Kainantu Gold Mine, Updated Definitive Feasibility Study, Kainantu Project, Papua New Guinea” dated March 21, 2025, with an effective date of January 1, 2024. Readers are encouraged to review the full text of the technical report, which is available on K92’s website and under the Company’s profile on SEDAR+.

K92 Mining – A Unique Tier-1 Opportunity



Rapid near-term growth to Tier 1 Mid-Tier Producer towards 500 koz AuEq pa at industry leading low costs

- Stage 3 Expansion to 300 koz AuEq pa (commissioning planned to start second half of Q2 2025) with average AISC of \$920/oz AuEq.
- Stage 4 Expansion to +400 koz AuEq pa average run-rate planned for steady state 2H 2027



Experienced team with proven track-record in Papua New Guinea



Strong balance sheet and mine cash flow supports mine transformation



Large, high-grade resource with significant growth potential from multiple deposits

- \$20m exploration budget in 2025, potential to double near-term upon delivery of Stage 3 Expansion
- Arakompa Maiden Mineral Resource targeting 1H 2025



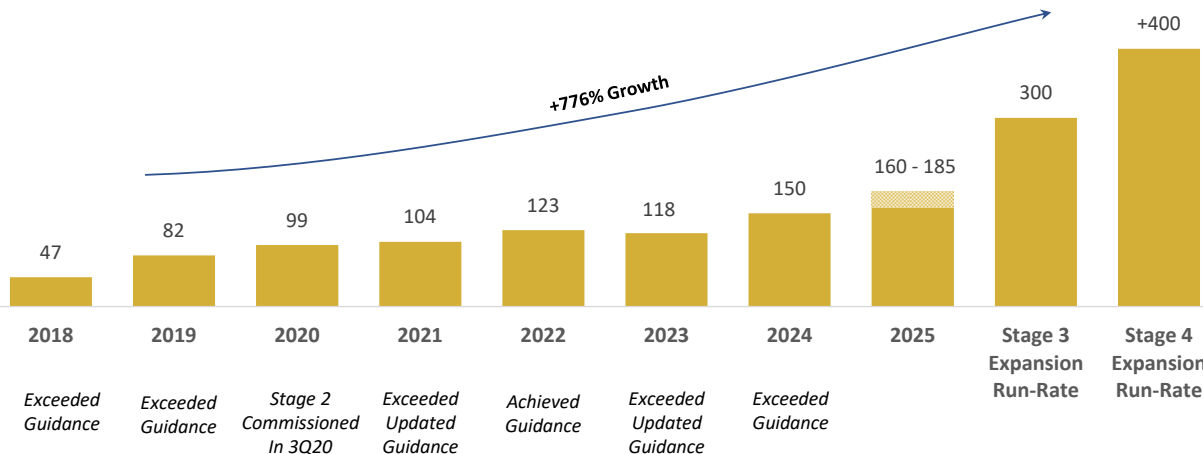
Significant re-rating potential ahead and during execution of near-term expansions

- Consensus P/NAV of 0.7x NAV vs Mid-Tier Producers at 1.3x NAV⁽¹⁾



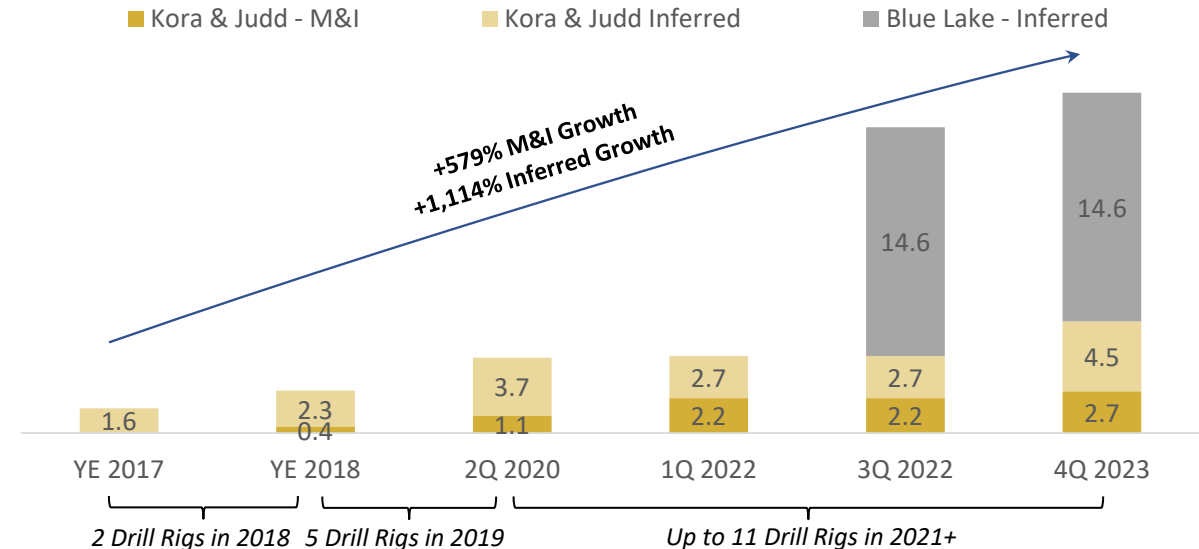
ESG focused with strong relationships with government, community and workforce

Mid-Tier Producer Growth Profile (koz AuEq)



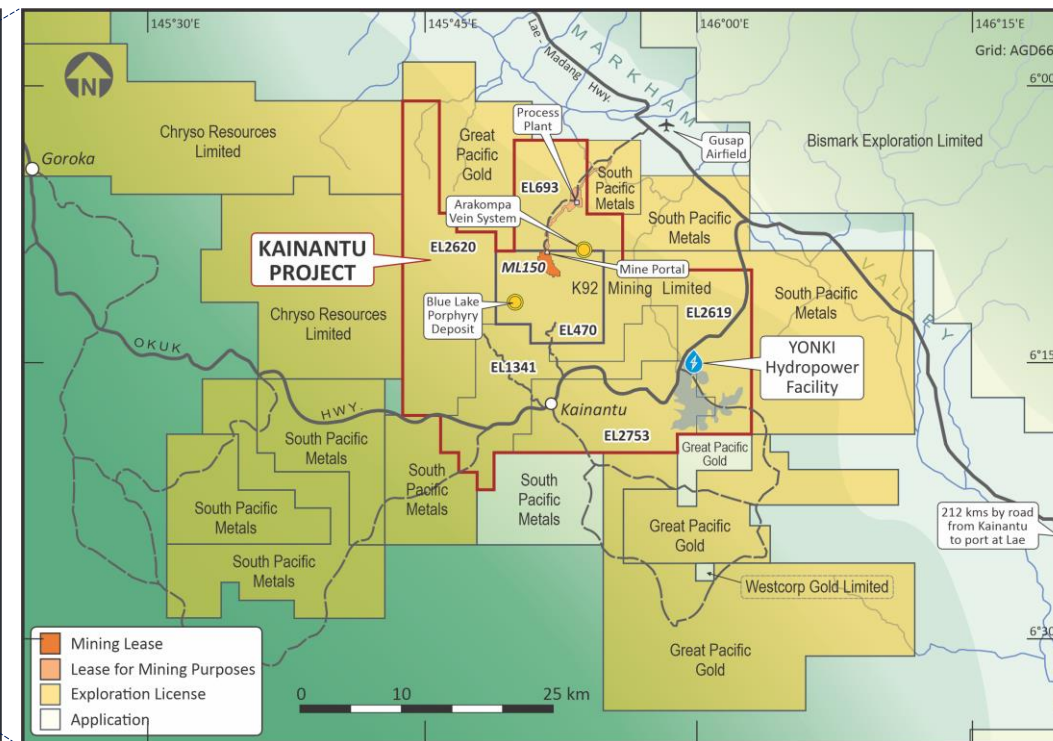
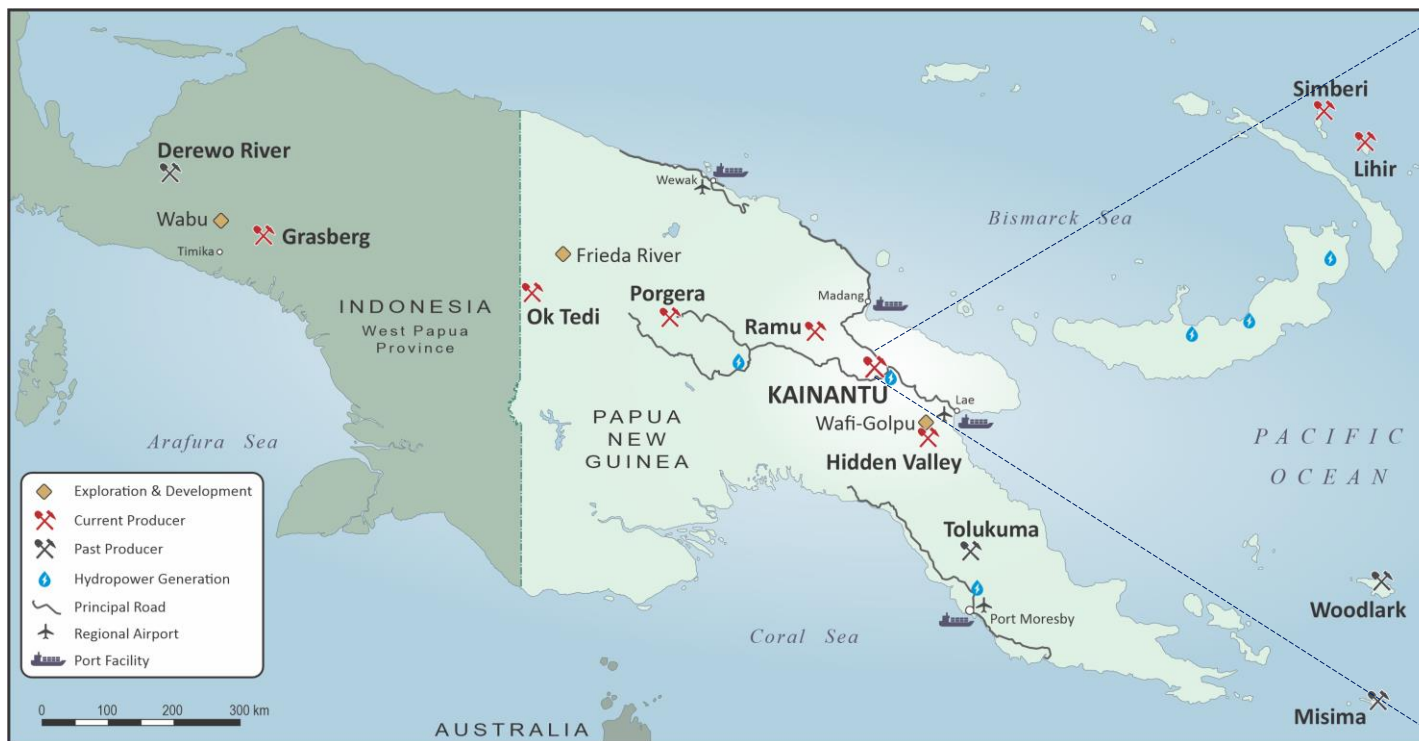
Note 1: Data based on analyst consensus estimates provided by BMO Capital Markets.

K92 Resource Growth Profile (moz AuEq)



Note: Kora and Judd resource estimates - refer to technical report dated March 21 2025 and titled, "Independent Technical Report, Kainantu Gold Mine, Updated Definitive Feasibility Study, Kainantu Project, Papua New Guinea". Blue Lake resource estimate - refer to Technical Report dated March 21, 2025 and titled, "Independent Technical Report, Mineral Resource Estimate Blue Lake Porphyry, Kainantu Project, Papua New Guinea".

Located Amongst World Class Geology and Excellent Infrastructure



Natural Resource Friendly Jurisdiction

- Multiple Senior Mining Companies Operating (Barrick, Harmony, Newmont)
- Vibrant democracy since independence in 1975
- ~87% of exports from mining, oil and gas⁽¹⁾



Located along Prolific Pacific Ring of Fire, hosting multiple world-class deposits in both PNG and West Papua



Large ~830 km² land package along major regional structure hosting multiple large world-class deposits/mines (Ramu, Wafi-Golpu, Hidden Valley)



Excellent and Well-Developed Infrastructure

- Plant, tailings dam and infrastructure located ~6.5 km from mine portal in Markham Valley (lowlands, plenty of land for construction)
- Sealed road from Port of Lae
- Hydro grid power (full standby diesel gen sets)
- Commercial airstrip

Corporate Structure

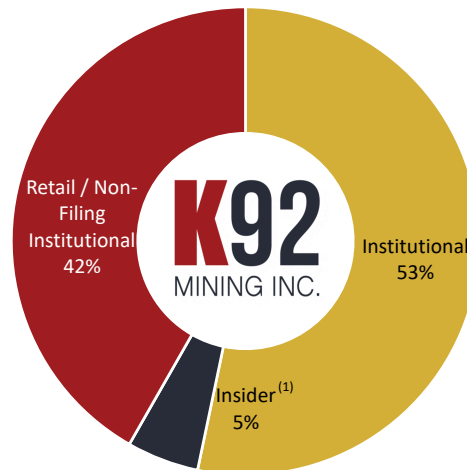
Key Financial Data (as at March 31/25)

Symbol	TSX: KNT, OTCQX: KNTNF
Fully Diluted Shares Outstanding	246.6
Cash, Cash Equivalents and Term Deposits	US\$182m
Debt	US\$59m
Remaining Additional Liquidity	Up to US\$90m

Analyst Coverage

Michael Gray	agentis CAPITAL
Andrew Mikitchook	BMO Capital Markets
Peter Bell	CG/Canaccord Genuity
Varun Arora	CLARUS SECURITIES INC.
Nic Dion	CORMARK SECURITIES INC.
Analyst Transition	Desjardins
Don DeMarco	NATIONAL BANK OF CANADA FINANCIAL MARKETS
Craig Stanley	RAYMOND JAMES
Michael Siperco	RBC Capital Markets
Ovais Habib	Scotiabank
Ralph Profiti	STIFEL GMP
Wayne Lam	TD Securities
Connor Mackay	Ventum Financial

Shareholder Overview



Fully Funded to Execute Growth Trajectory

- ✓ Strong Cash Balance
- ✓ Significant Available Liquidity From Credit Facilities
- ✓ Record Production and Record Gold Prices = Strong Operational Cash Flow
- ✓ Downside Protected During Construction

Puts Purchased for US\$4.0m in May/24 covering 15,000 oz Au per month at \$3,000/oz for 8 months (until Dec/2025), to protect against commodity price risk during the construction. **This is not a hedge, this is insurance, and we retain FULL EXPOSURE TO THE UPSIDE IN COMMODITY PRICES.**



Chart courtesy of [StockCharts.com](https://www.stockcharts.com)

Delivering Sustainable Value For the Prosperity of Papua New Guinea



At K92, we have a strong focus on the prosperity and development of PNG and our host communities through responsible mining practices.

We are proud to:

- Currently employ +2,000 people (employees & contractors) with ~94% of total workforce from PNG
- Operate a low-footprint underground mine with traditional tailings impoundment, no permanent surface waste rock facilities, and no cyanide used for processing
- Advance multiple long-term social and economic development initiatives in PNG including (but not limited to):
 - Creating business opportunities for landowner group via JVs with local businesses
 - Providing tertiary education scholarships
 - Developing skills through multiple MOAs with tertiary institutions
 - Investing in female empowerment programs
 - Delivering numerous local infrastructure and services development programs
- Target a 30% reduction in GHG emissions by 2030 (against a business-as-usual forecast)

K92 maintains a strong commitment to environmentally and socially responsible mining to deliver long-term, sustainable value to all its stakeholders.

Value Creation Through Discovery

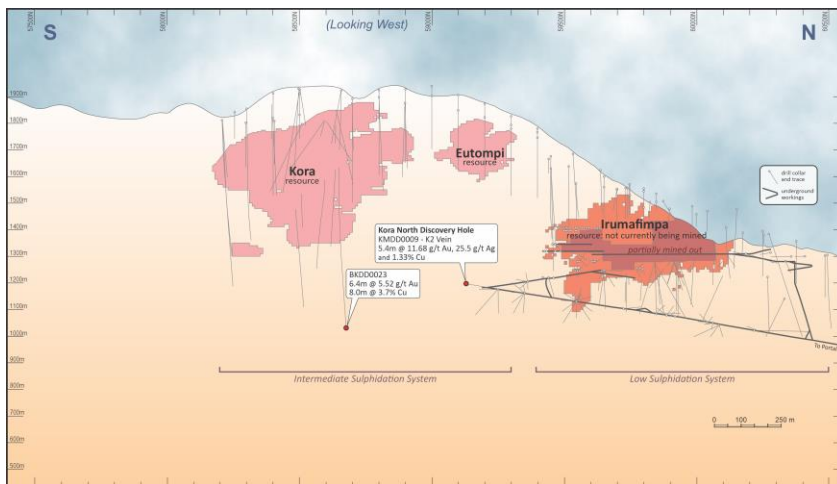
May 2017

October / December 2021

September 2023

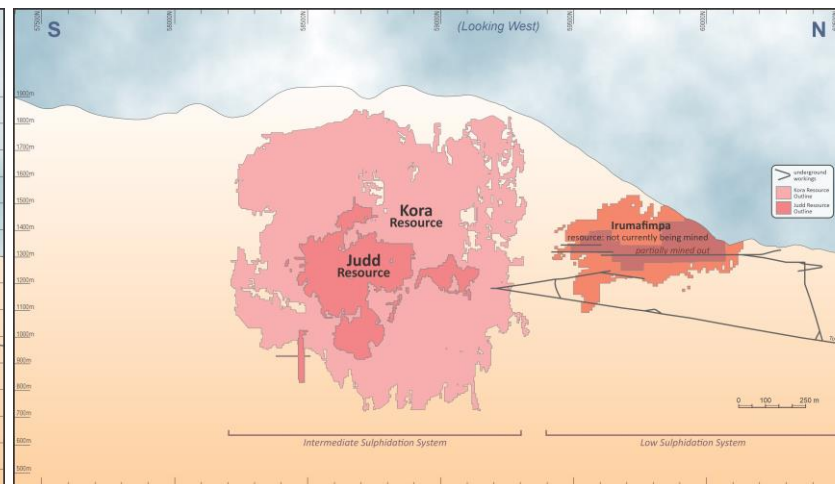
(Long Sections, Looking West)

Kora North



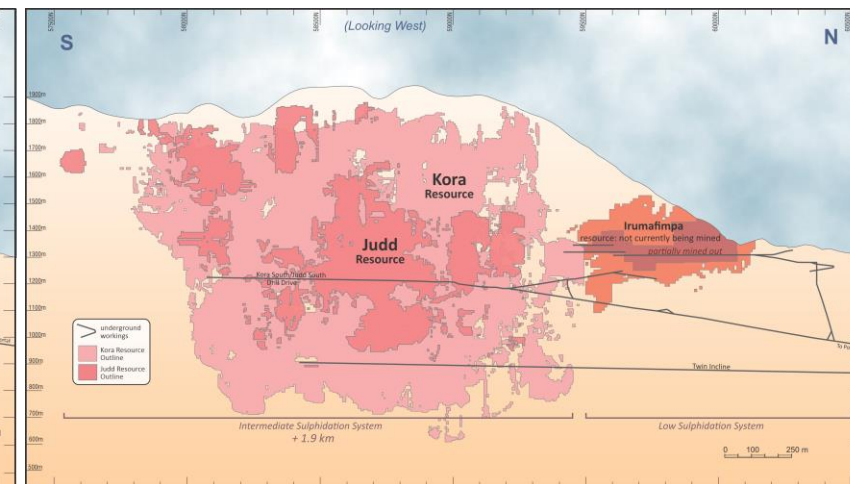
1.7 moz at 11.6 g/t AuEq Inferred¹

Kora and Judd



2.3 moz at 9.3 g/t AuEq Measured & Indicated
2.6 moz at 9.1 g/t AuEq Inferred²

Kora and Judd



2.6 moz at 10.0 g/t AuEq Measured & Indicated
4.5 moz at 8.5 g/t AuEq Inferred³

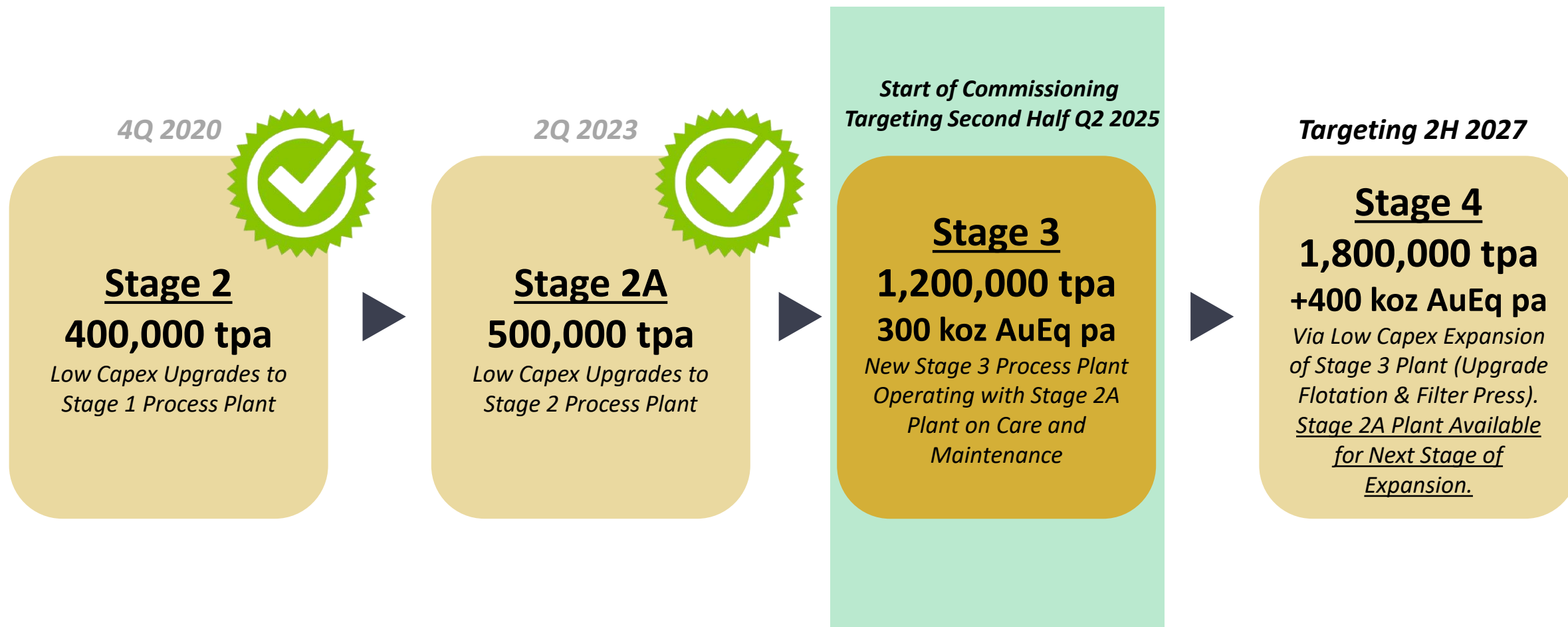
K92 has and continues to create significant value through exploration and expansion

1) Inferred Resource Grade: 11.6 g/t AuEq (7.1 g/t Au, 34 g/t Ag, 2.2% Cu).

2) Measured and Indicated Resource Grade: 9.3 g/t AuEq (7.7 g/t Au, 18 g/t Ag, 0.9% Cu). Inferred Resource Grade: 9.1 g/t AuEq (6.8 g/t Au, 26 g/t Ag, 1.3% Cu).

3) Measured and Indicated Resource Grade: 10.0 g/t AuEq (7.8 g/t Au, 21 g/t Ag, 1.2% Cu). Inferred Resource Grade: 8.5 g/t AuEq (5.7 g/t Au, 27 g/t Ag, 1.5% Cu).

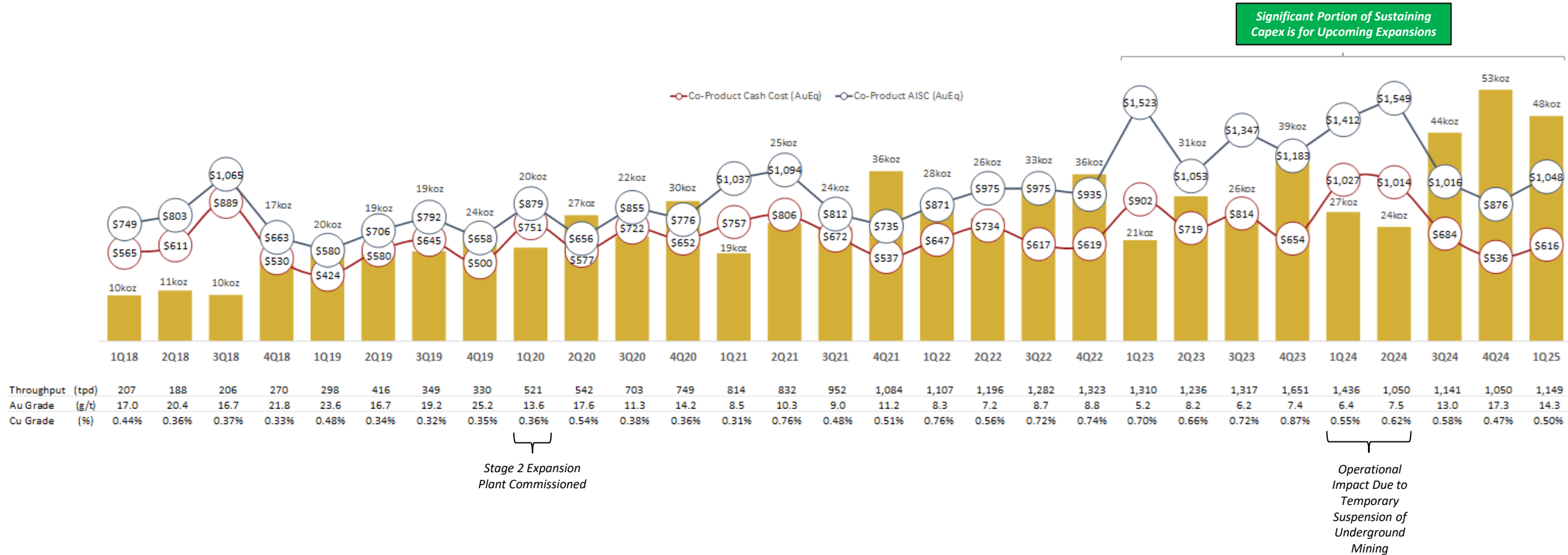
Systematically Executing to Become a Tier 1 Mid-Tier Producer



The Stage 3 and 4 Expansions are Fully Financed and Approximately 77% of Growth Capital has been spent or committed and 87% of the process plant construction is complete as at April 30, 2025

Operational Performance – Since Commercial Production

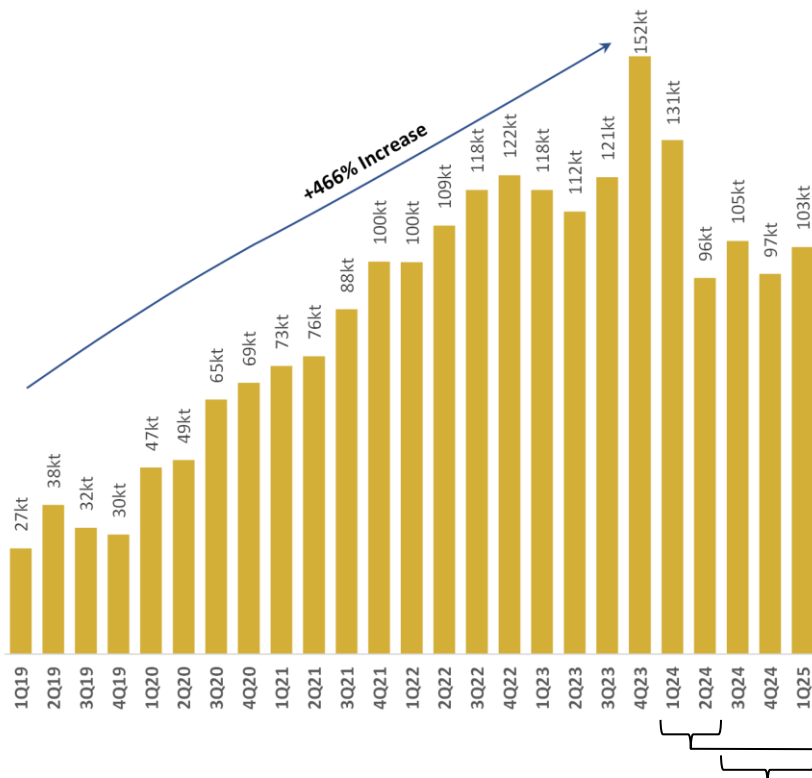
AuEq Production (koz), Cash Cost (\$/oz AuEq) and AISC (\$/oz AuEq)



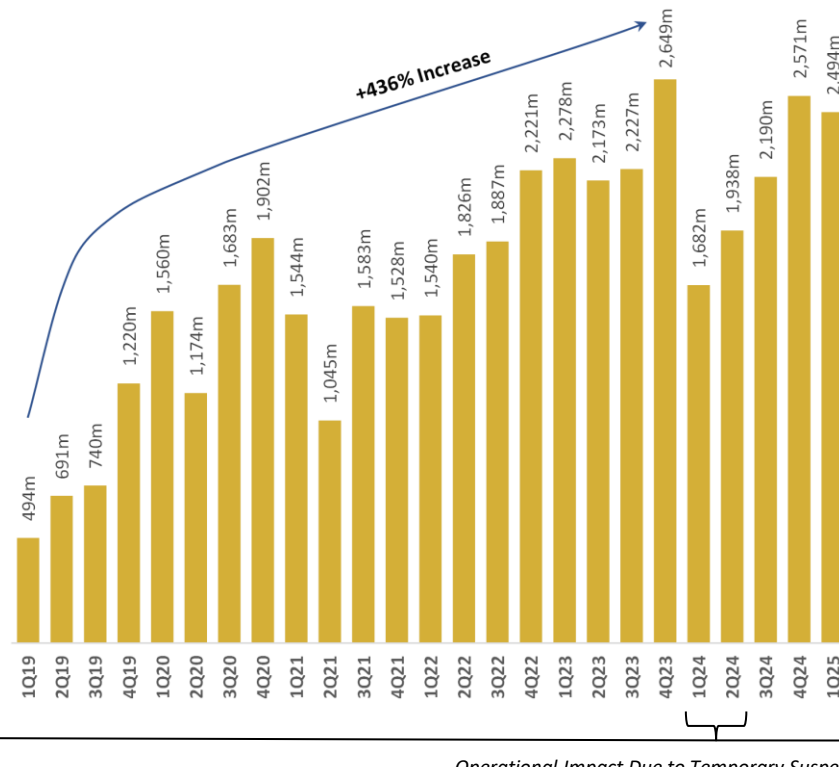
Stage 2A Plant Expansion Commissioned in May/2023
Major Sustaining Capex Investment since 2023 is for Upcoming Expansions

Kainantu Mine Execution

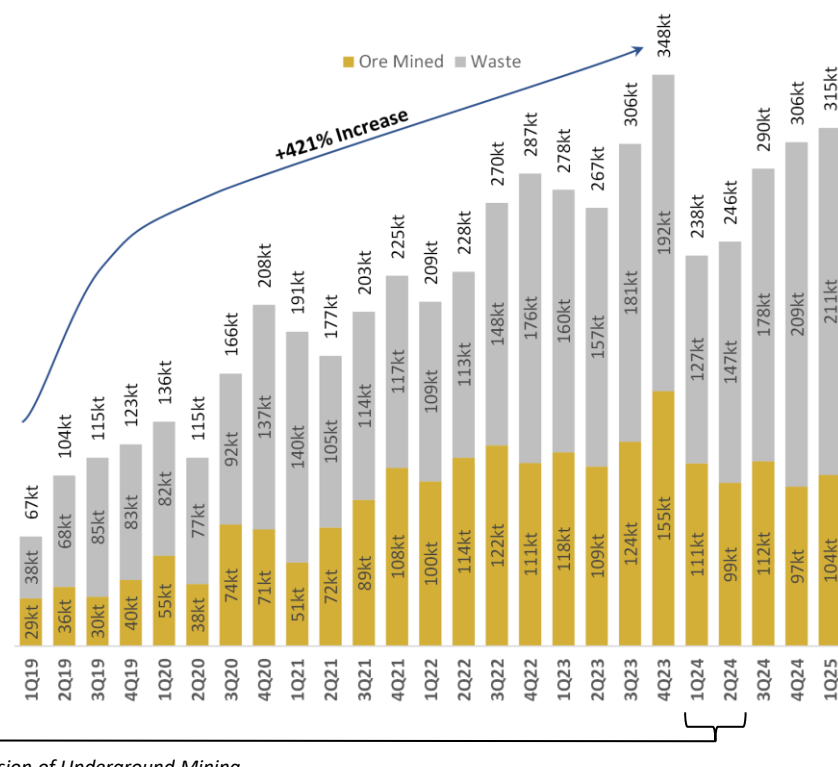
Total Ore Processed (kt)



Total Development (m)



Total Mined Material (kt)



Throughput optimally reduced to maximize recoveries at higher feed grade

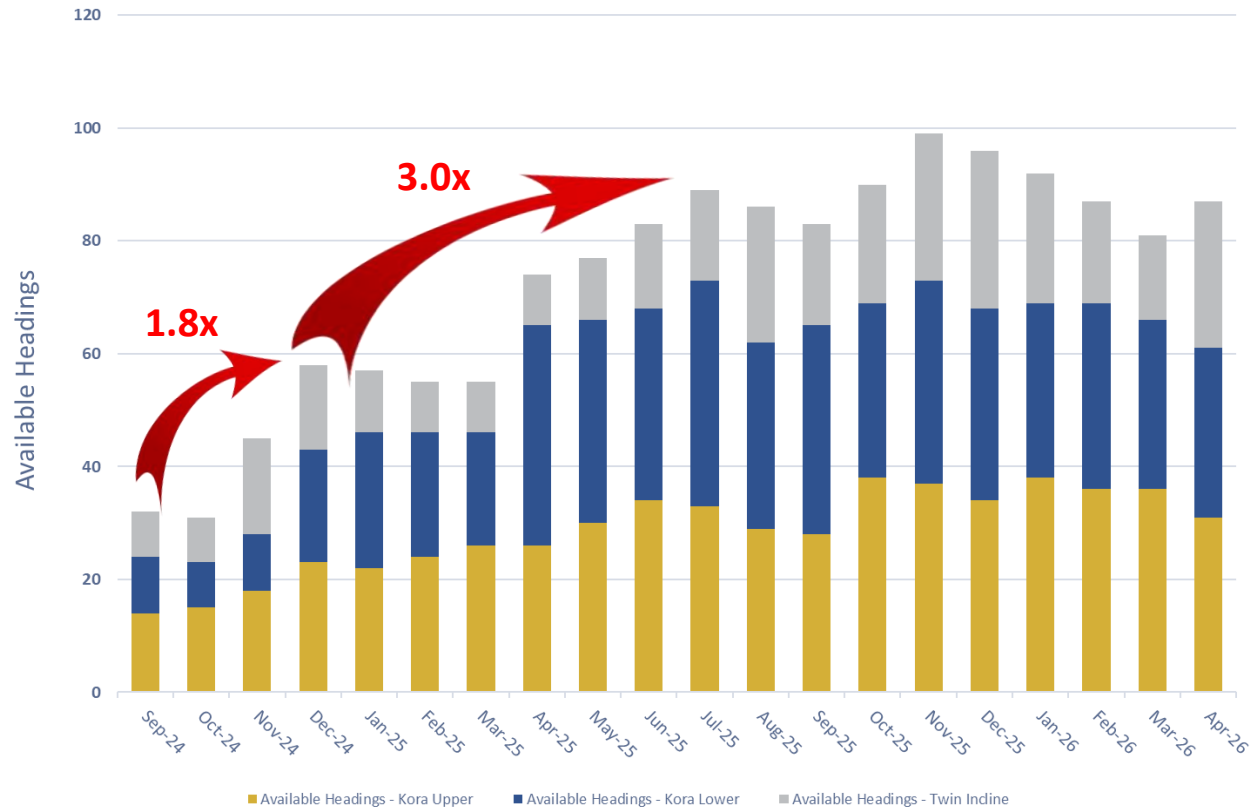
Operational Impact Due to Temporary Suspension of Underground Mining

Q1 throughput was optimally reduced to maximize recoveries at a higher feed grade of 14.9 g/t AuEq

March achieved record monthly development of 954 m

Development Ramp-Up Key Enablers

Lateral Development Monthly Available Headings



- 1.8x increase in number of available headings by Dec 2024 vs current
- 3.0x increase in number of available headings by July 2025 vs current
- **Significant increase in headings = significantly improved jumbo productivities.**

Multiple Key Enablers To Increase Lateral Development:



Power Upgrade



Interim Water Management Upgrade (Completed at End of January)

- Both Stage 1 and Stage 2 Complete



Significant increase in number of available headings

- Multi Heading Jumbos 250m/mo vs Single Heading 150m/mo



Excess available Jumbos to mobilize UG on Demand

- 8 Jumbos onsite: 4 active + 2 training jumbos + 2 spares



High-Speed Development Experts Hired

- Recent onboarding of multiple high-speed development experts to manage development and drive productivity.



Interim Ventilation Upgrade (Completed in January)

- 50% increase in primary airflow recorded

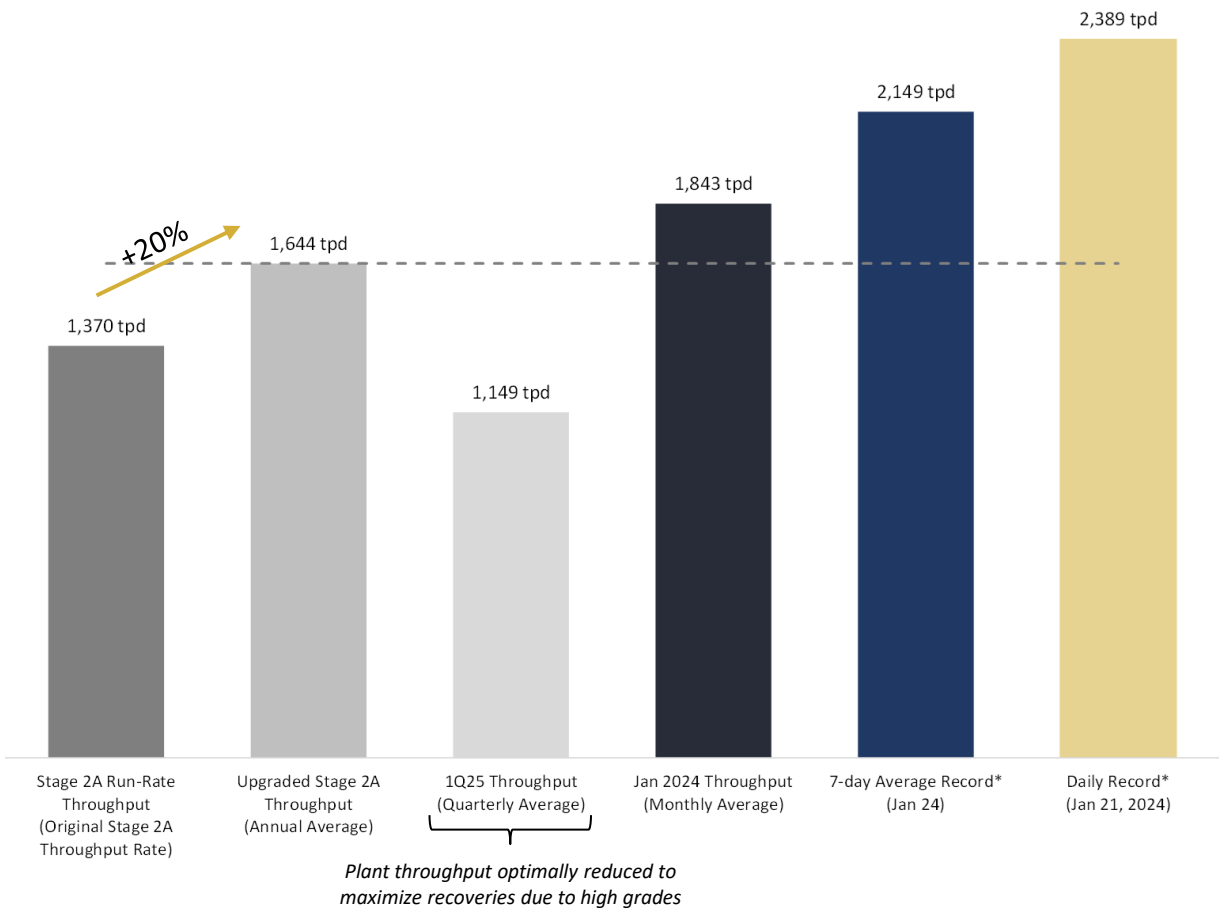


Implementation of Enhanced Maintenance Program

- Increase equipment fitters team size, and implement enhanced maintenance program

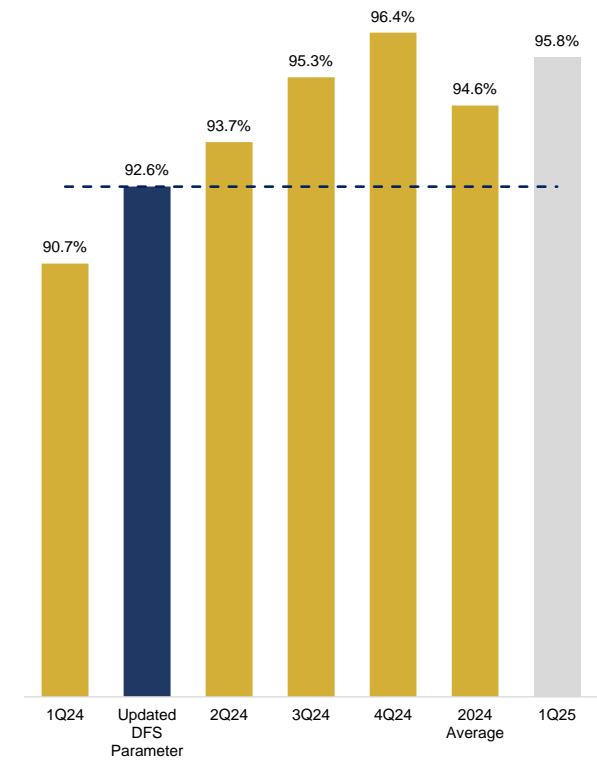
Strong Process Plant Performance

Throughput

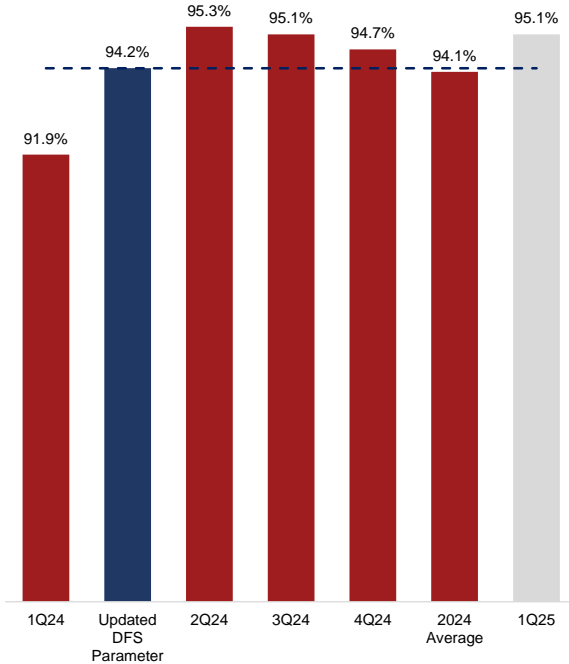


Recoveries

Gold



Copper



Process Plant Has Performed Extremely Well

Showing Increased Throughput Capacity and Recoveries Exceeding Updated DFS Parameters

Note (*): +2,000 daily tonnes processed achieved on days with 22.5 to 23.5 hours of plant operation and 7-day tonnes processed recorded achieved with 95.4% and 94.6% plant availability in January and February, respectively. 2024 budget annual average plant availability is 94.0%.

Near-Term Mine Transformation: Major Infrastructure Upgrades

1

Twin Incline



Scope: High Speed 2.9km twin incline, capable of +5 mtpa with conveyors
Status: Effectively Complete
Impact: Transforms material handling efficiency with large and high-speed travel way.

2

Ore Pass System

Scope: Raise Bore Ore and Waste Pass System to connect Main Mine with Twin Incline
Status: Raise bores purchased and at site, first raise bore ore pass completed early-Q1 2025, fully operational early-Q3 2025.
Impact: Transforms material handling efficiency, improves mining cycle at the Main Mine. Vast majority material to travel via the highly efficient twin incline.

3

Puma Vent Incline

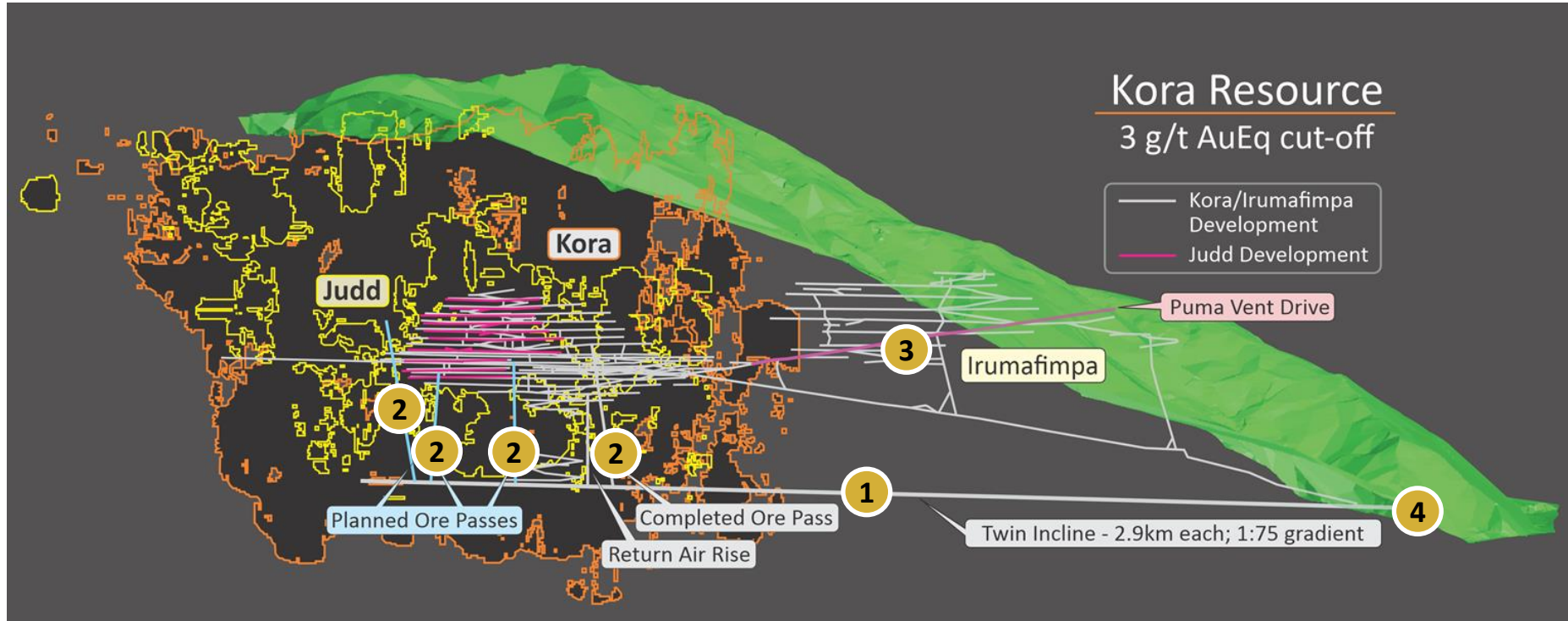
Scope: Twinning of the existing puma incline for vent
Status: Underway (targeting completion Q3 2025)
Impact: +50m³/s upon breakthrough, up to ~4x airflow increase to main mine with fan upgrades from current flow rates, meets Stage 3 and 4 Expansion requirements.

4

Pastefill System

Status: Targeting completion after Stage 3 Plant commissioning completed
Impact: Significant improvement to mining method plus mine flexibility via enabling mining in two directions vertically instead of currently one.

Kora-Irumafimpa Planned Twin Incline and Development Long Section (Looking West)



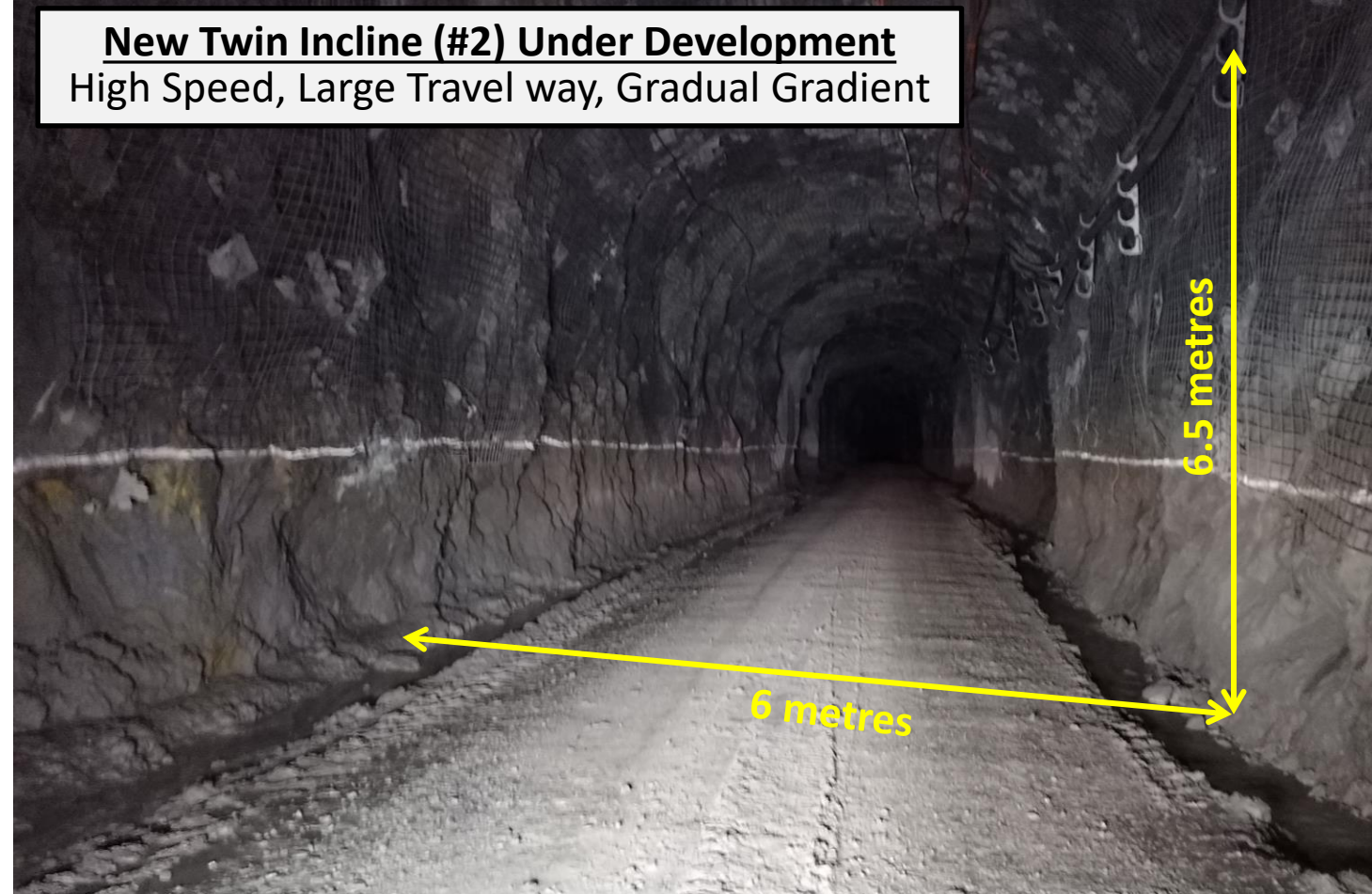
Underground Productivity To Be Transformed Through Various Near-Term Infrastructure Upgrades

Rapid Ore Transport - Twin Incline Effectively Complete

Existing Incline to Main Mine
Transported 1 mt (waste & ore) in 2022



New Twin Incline (#2) Under Development
High Speed, Large Travel way, Gradual Gradient



The Twin Inclines Are Effectively An Underground Expressway
Capable of Throughput Over 5 mtpa with Conveyors and is
Significantly Greater than Stage 4 Expansion Requirements

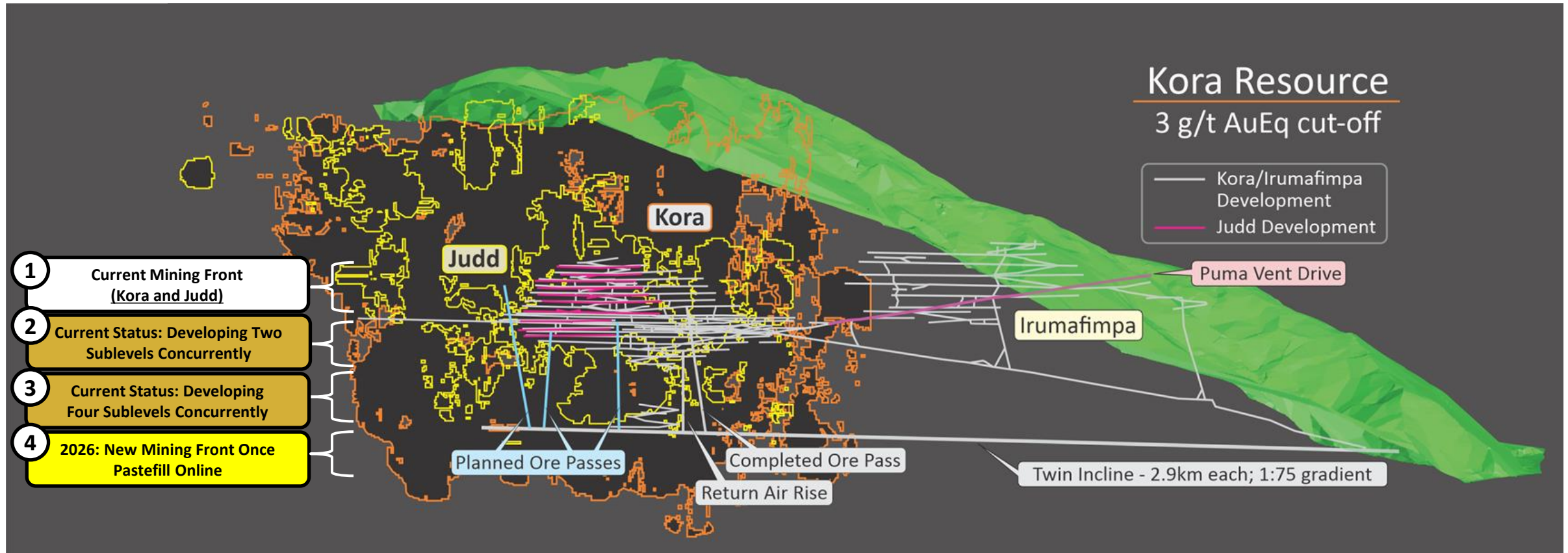
Ore Pass System – Raise Bore Rigs Operational



Reaming of First Raise (5m diameter) completed to upgrade Ventilation to Main Mine
Completed Development of First Waste/Ore Pass Connecting Main Mine to Twin Incline to drive significant productivity increase in material handling (fully operational by early Q3 2025)

3x Increase of Mining Fronts by End of 2025

Kora-Irumafimpa Long Section (Looking West)



**There was Effectively One Mining Front Producing Ore in 2023/2024
Triples to Three Fronts Producing Ore in 2025 And Increases to Four Fronts in 2026**

Site Visits by Morobe Province and Eastern Highlands Province Delegations

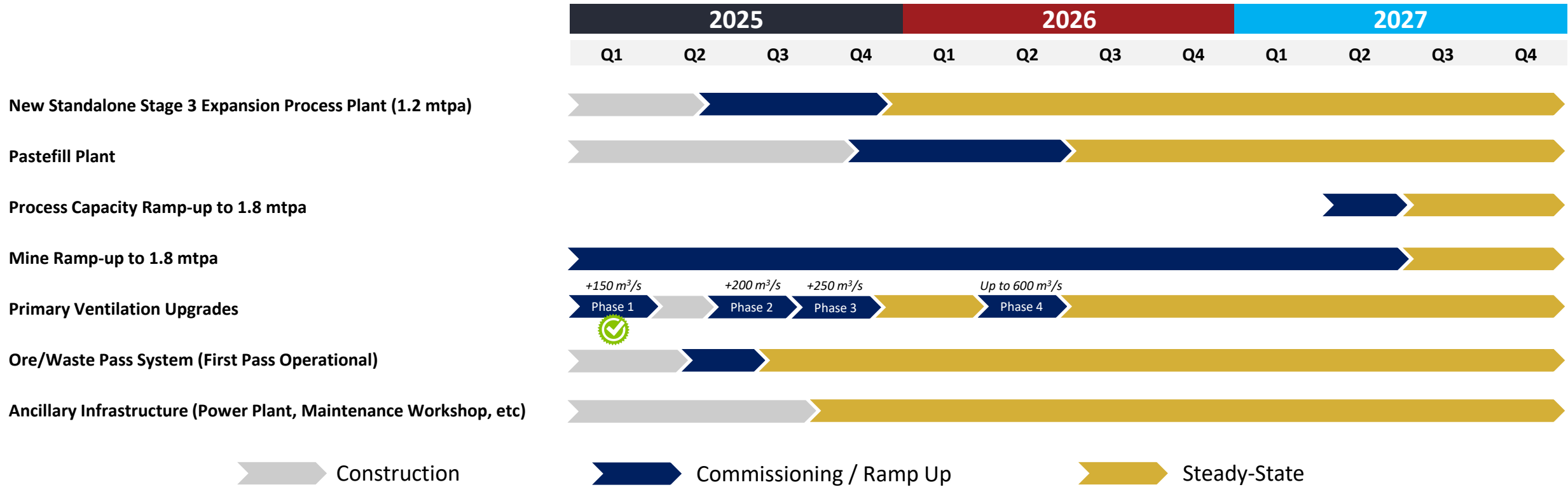
February 2025 Site Visit – Delegation Lead by
Governor of Morobe Province Hon. Luther Wenge



March 2025 Site Visit – Delegation Lead by
Governor of EHP Province Hon. Simon Sia



Near-Term Delivery of Stage 3 & 4 Expansions



Construction of the process plant is rapidly advancing with all long-lead items having already arrived on site

Process Plant Construction Rapidly Advancing



Construction is advancing across all major plant areas, with the process plant now 87% complete, positioning the project well for the upcoming commissioning phases

Construction Rapidly Advancing

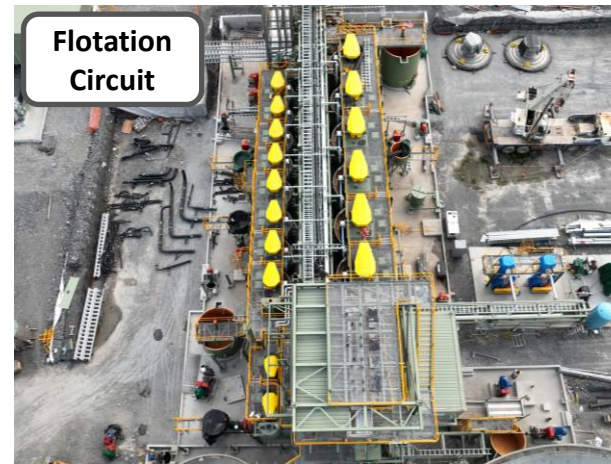
**Grinding Circuit
(SAG + Ball Mill Installed)**



Flotation Circuit



**Flotation
Circuit**



Surge Bin



Construction is most advanced at the grinding circuit, with both the SAG and Ball mills now installed — a key milestone on the plant's critical path

Ancillary Construction Projects Progressing Well

Interim Power Station - Complete



Warehouse Construction - Complete



**New Kumian Creek Camp
– Nearing Completion**



Primary Power Station – In Progress

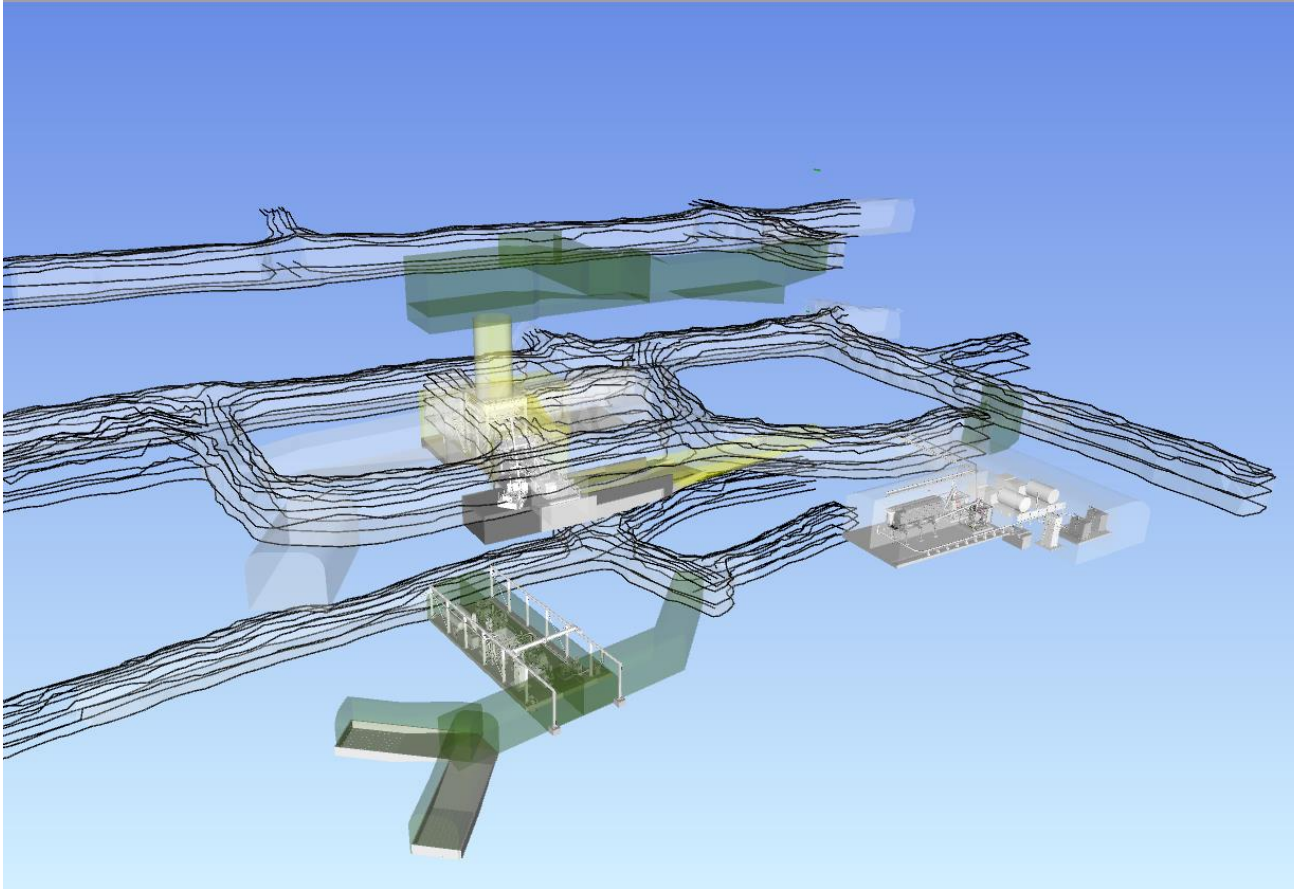


New Maintenance Facilities - In Progress

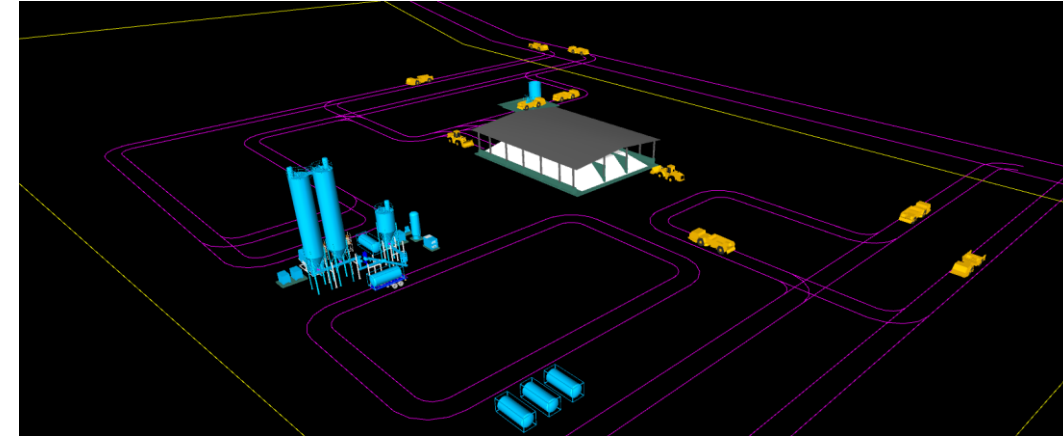


Construction works on multiple ancillary packages is progressing well, supporting the next phase of expansion

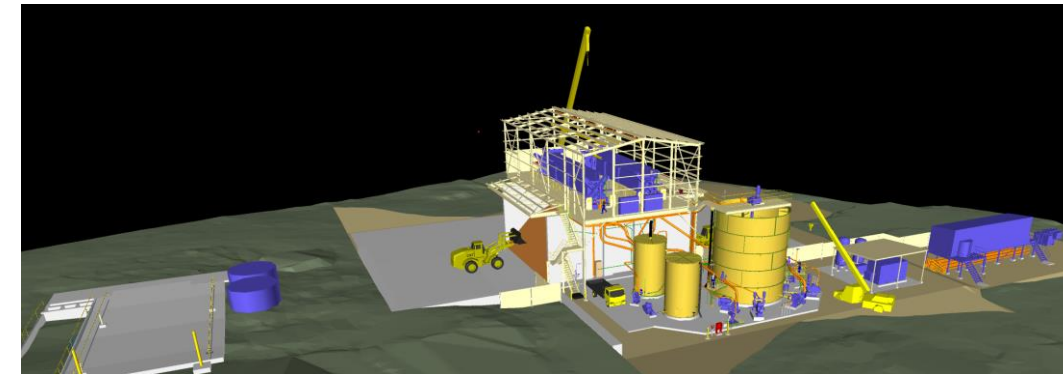
Underground Paste Plant



Surface Storage System Near Portal



Tailings Filtration Plant



Paste Fill Plant Front End Engineering and Design Complete, GR Engineering nearly complete and Quattro Engineering well advanced on Detailed Engineering and Design, All Paste Fill Plant Long Lead Items Ordered, Early Earthworks Underway, and the Award of Construction Contracts Well Advanced

Multiple High Priority Near-Mine Targets

Multiple High Priority Near-Mine Vein and Porphyry Targets

1

Kora & Kora Deep (Vein)

- Kora open to depth and along strike

2

Kora South & Judd South (Vein)

- Structure extends +1km beyond mining lease
- Outcrop and historical mining, previously undrilled

3

Judd & Judd Deep (Vein)

- Subparallel to Kora, high-grade historical & recent intersections
- ~150-200m from existing mine infrastructure

4

Maniape and Arakompa (Vein)

- Arakompa: +1.7km strike, +500m vertical, 150-225m wide mineralized corridor
- Maniape: +1km strike, +200m vertical

5

Karempa (Vein)

- Artisanal workings, presumed porphyry below high-grade veins
- ~400-450m from existing mine infrastructure

6

Mati, Mesoan and Bona Creek (Vein)

- Surface geochemical sampling being conducted ahead of drill program

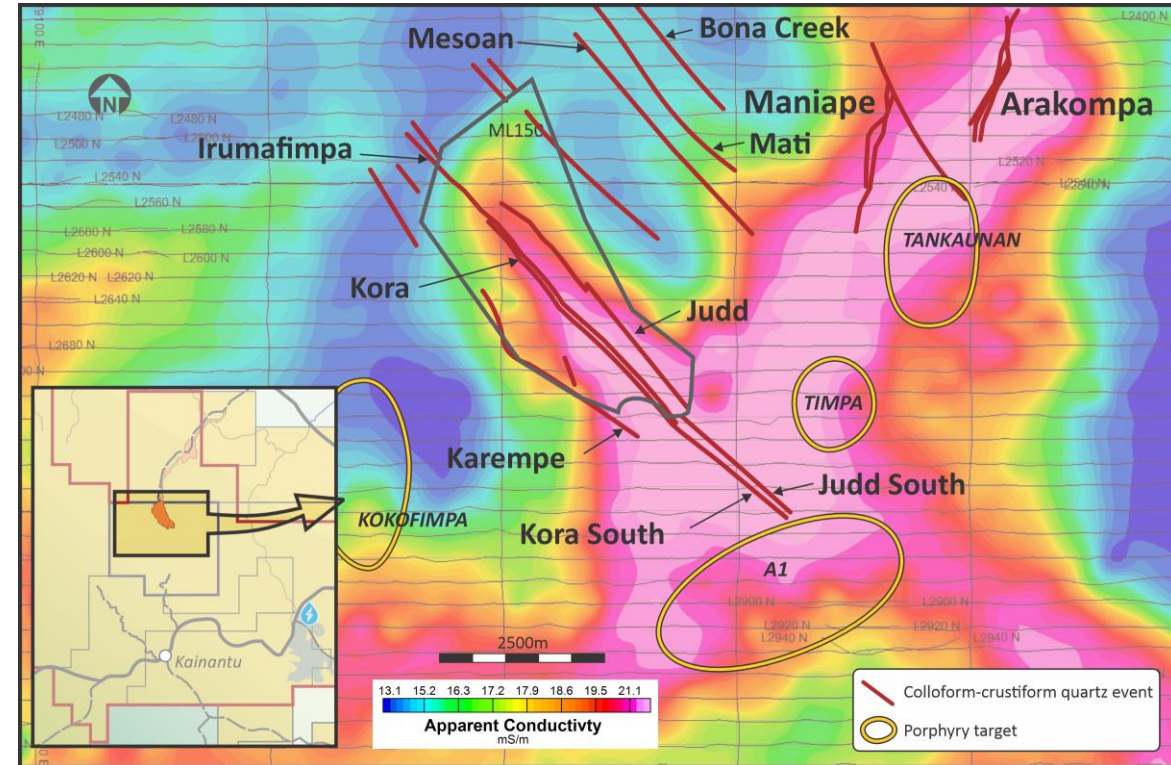
7

A1 (Porphyry)

- Latest advanced mobile MT geophysics confirms A1 as our #1 porphyry target

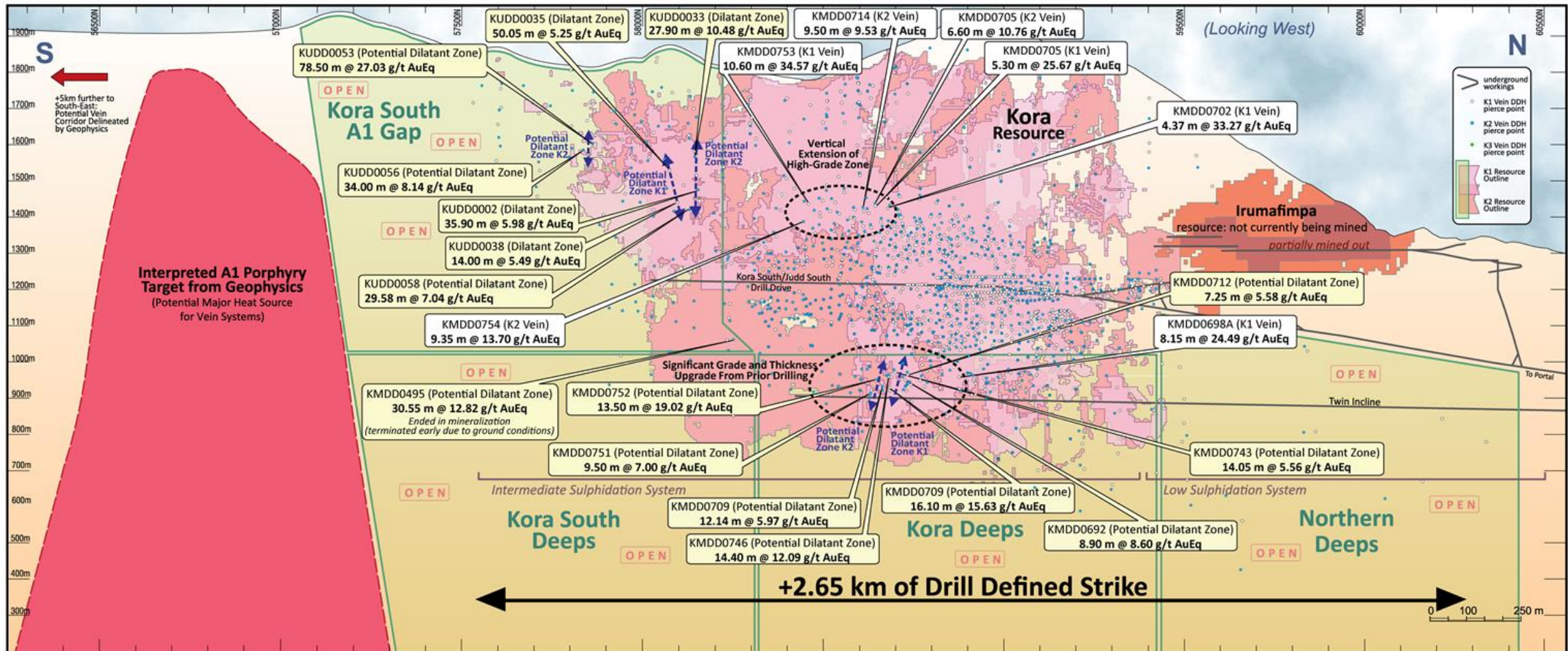
 = Drilling Underway

Airborne Geophysics and Target Locations



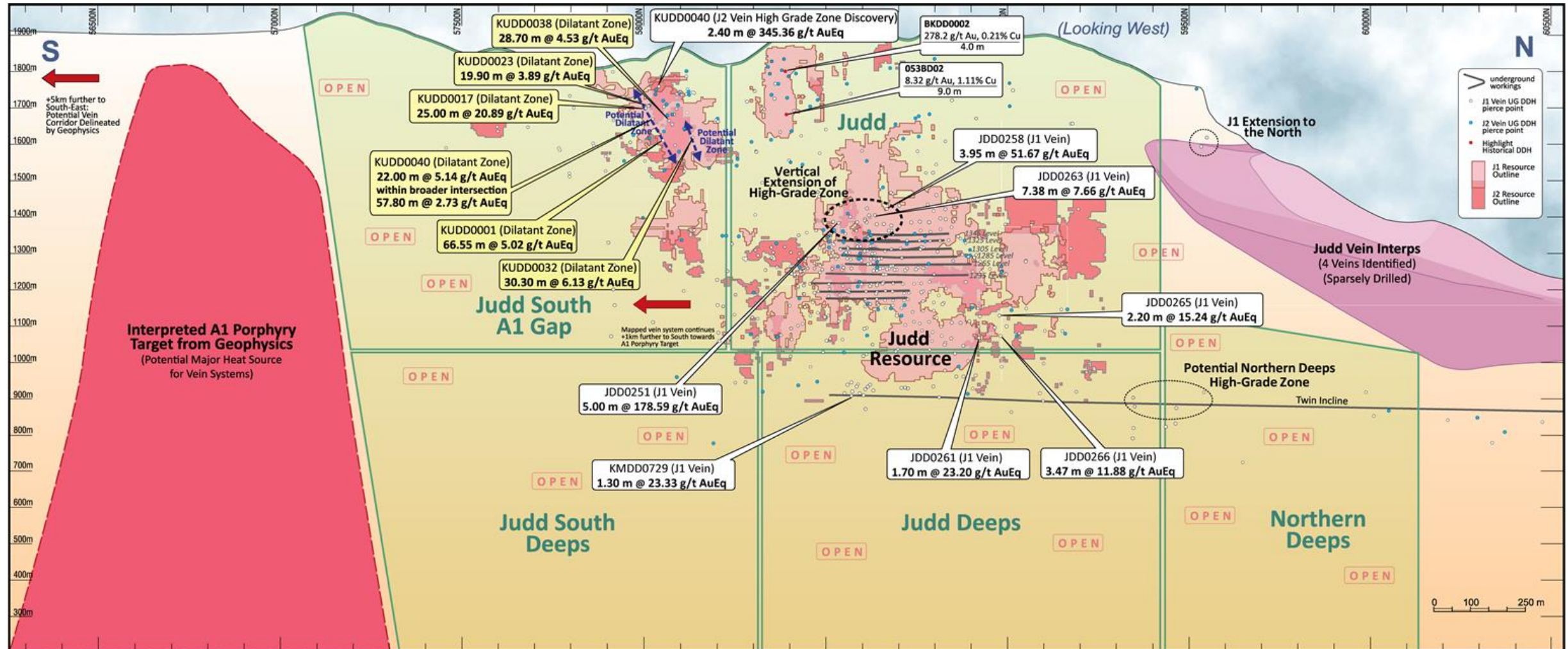
Significant Resource Expansion at Highly Prospective Near-Mine Vein Field
Established Infrastructure = Rapid Transition from Discovery to Mining

Exploration Target: Kora, Kora South & Kora Deepes



Multiple Highly Prospective Exploration Fronts Being Drilled Concurrently
Kora South from Surface, Kora Deepes and South Deepes Underway from
Twin Incline and Kora South Underway from 1205 Level Drill Drive

Judd and Judd South Vein System is Very Underexplored



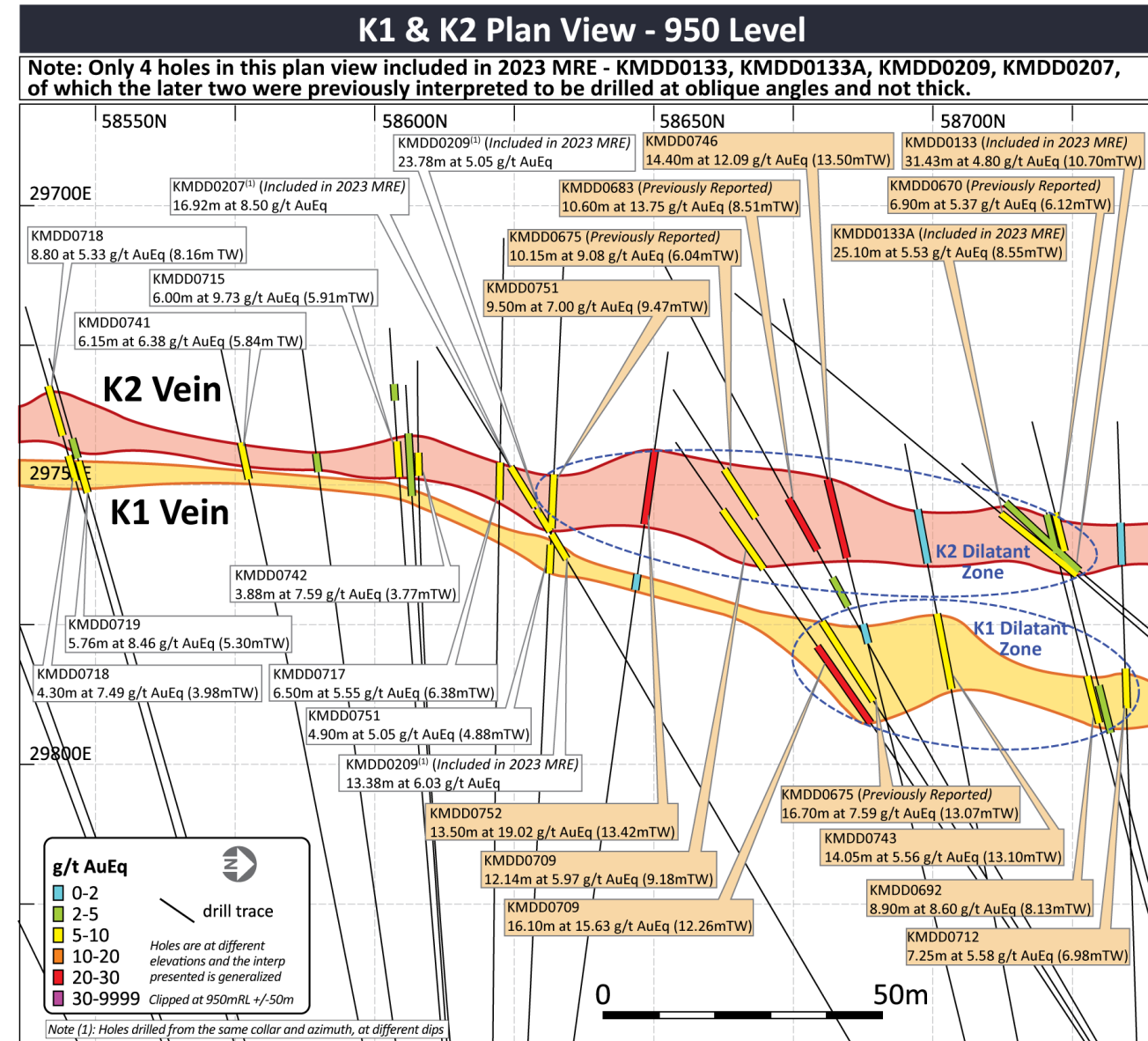
Judd is Sparsely Drilled, Has at Least 4 Known Veins and Open in All Directions
Significant Amount of Drilling Completed Since the Judd Resource and
Drill Defined Strike Length has Increased +130% Since End of 2021

Latest Drilling Results Kora-Kora South – K1 & K2 Vein Plan View

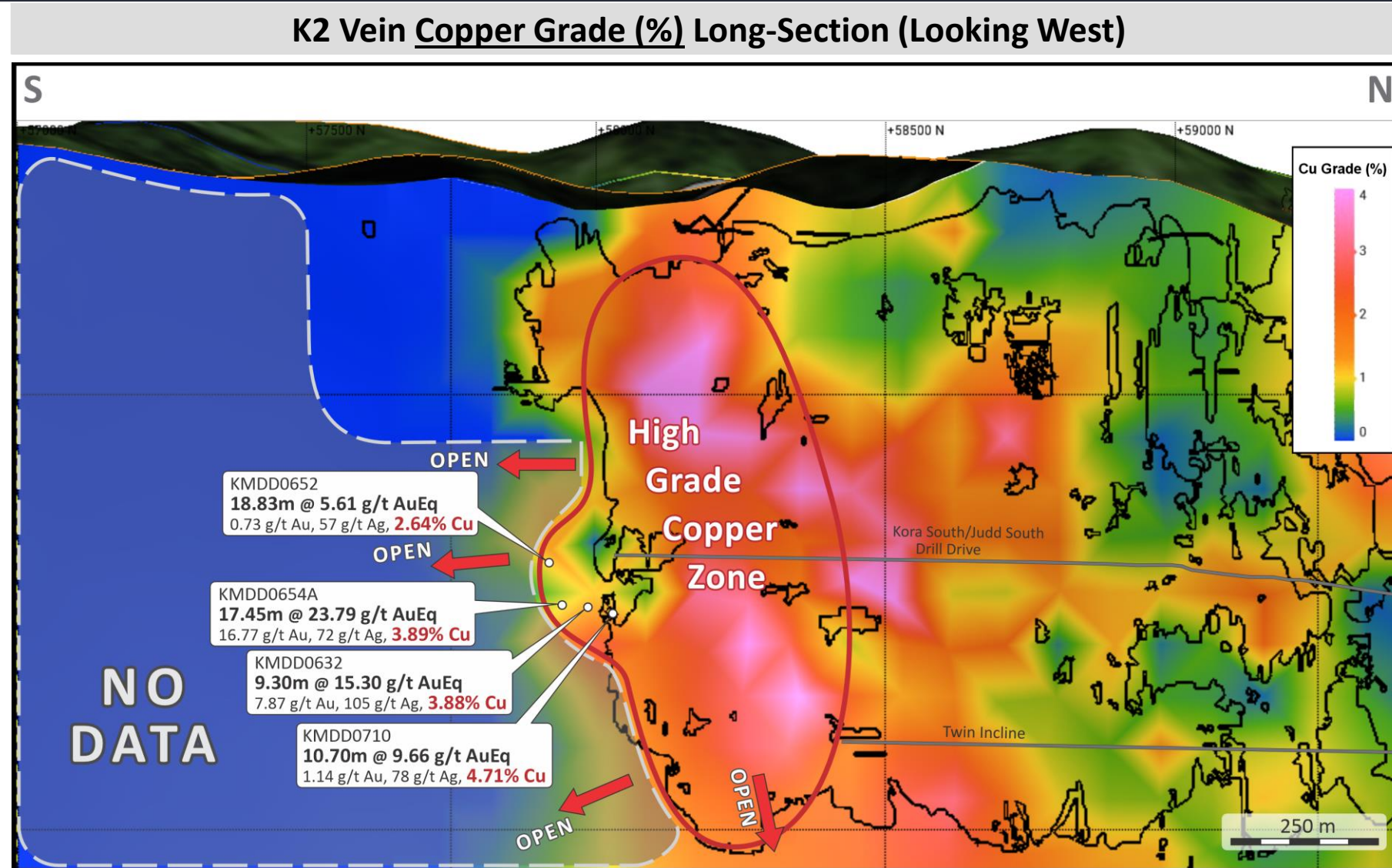
Key Facts

- The dilatant zones identified are the first to be drilled with significant drill density, demonstrating large interpreted strike lengths of approximately 60m in K1 and approximately 100m in K2, providing high potential for bulk mining.
- The dilatant zones are in an area previously interpreted to be narrow vein in the mineral resource estimate (September 12, 2023 effective date), while also recording multiple high-grade intersections.

The Dilatant Zones feature long strikes, are located only 175 m south of current development, providing a near and medium term boost to the Stage 3 and 4 Expansions



Copper Grade Tenor Increasing to the South towards A1 Porphyry

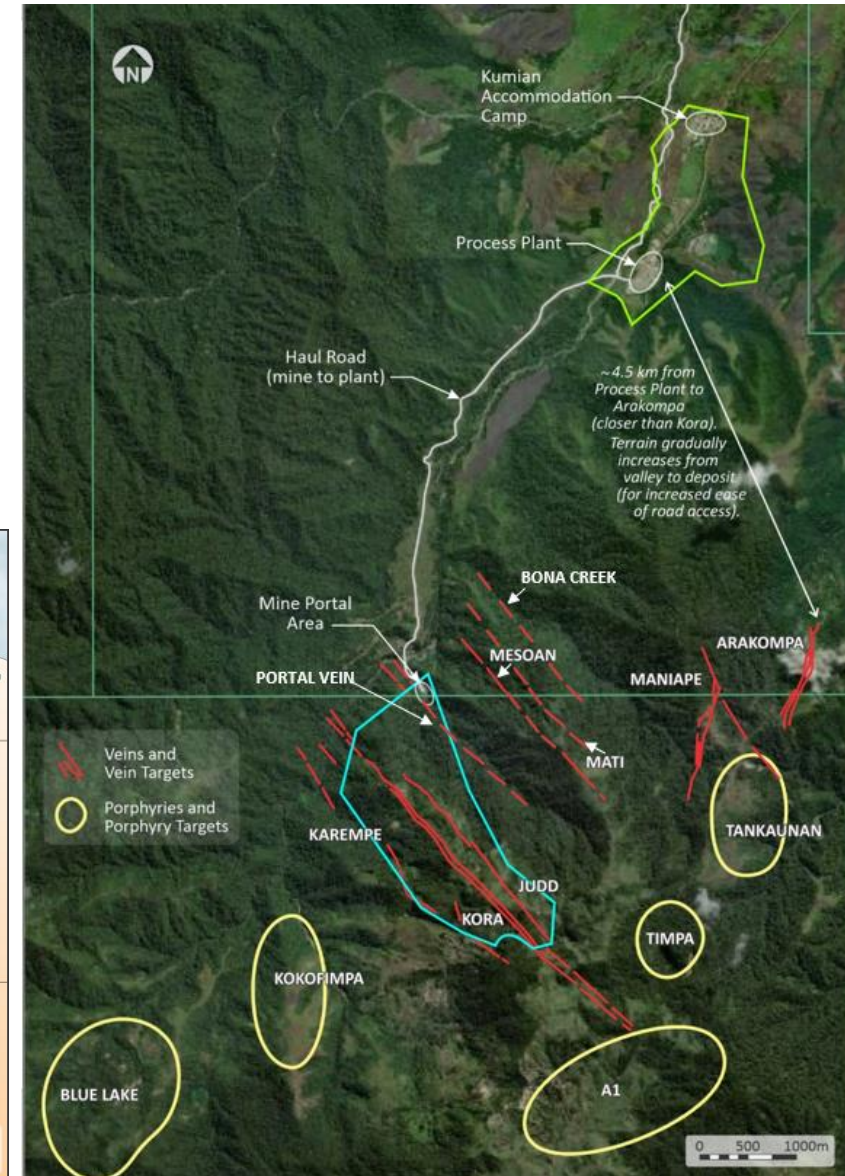
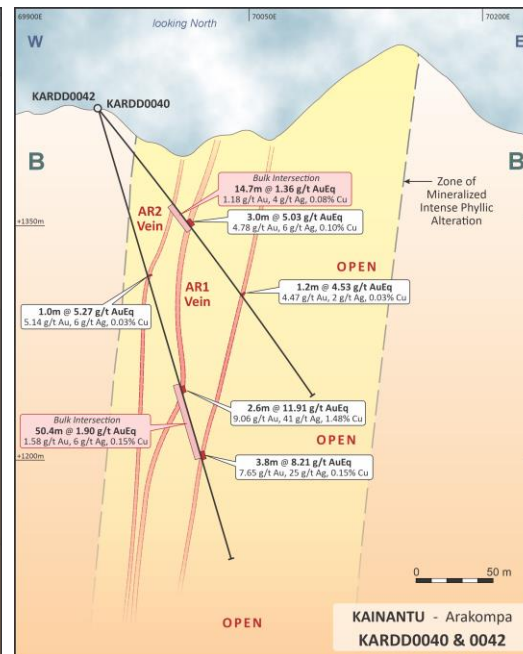
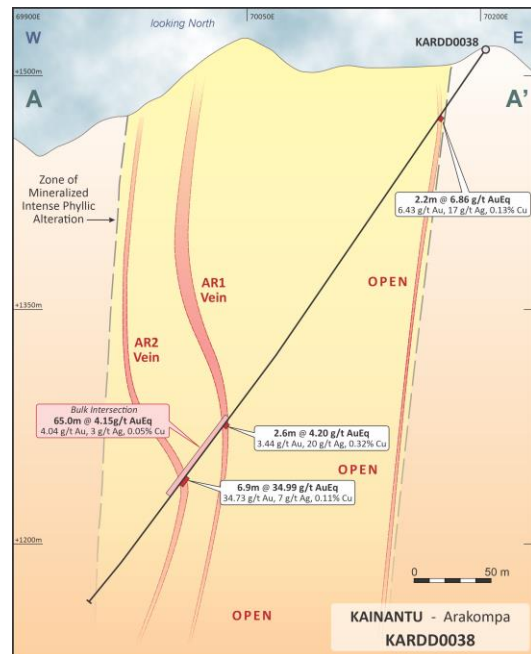
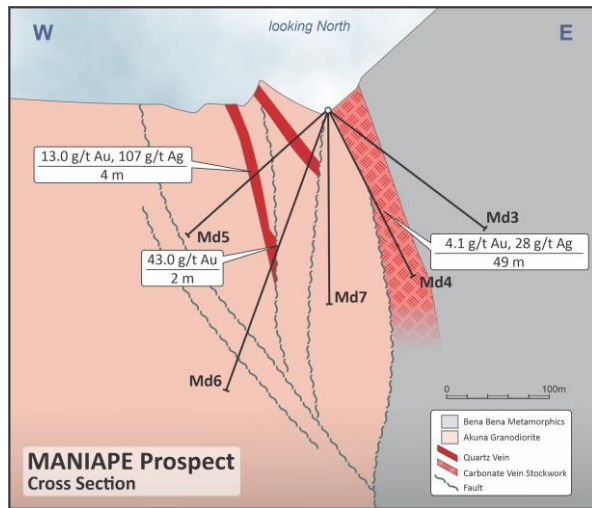


Kora South/Judd South Drill Drive Well Established for Step-Out Drilling

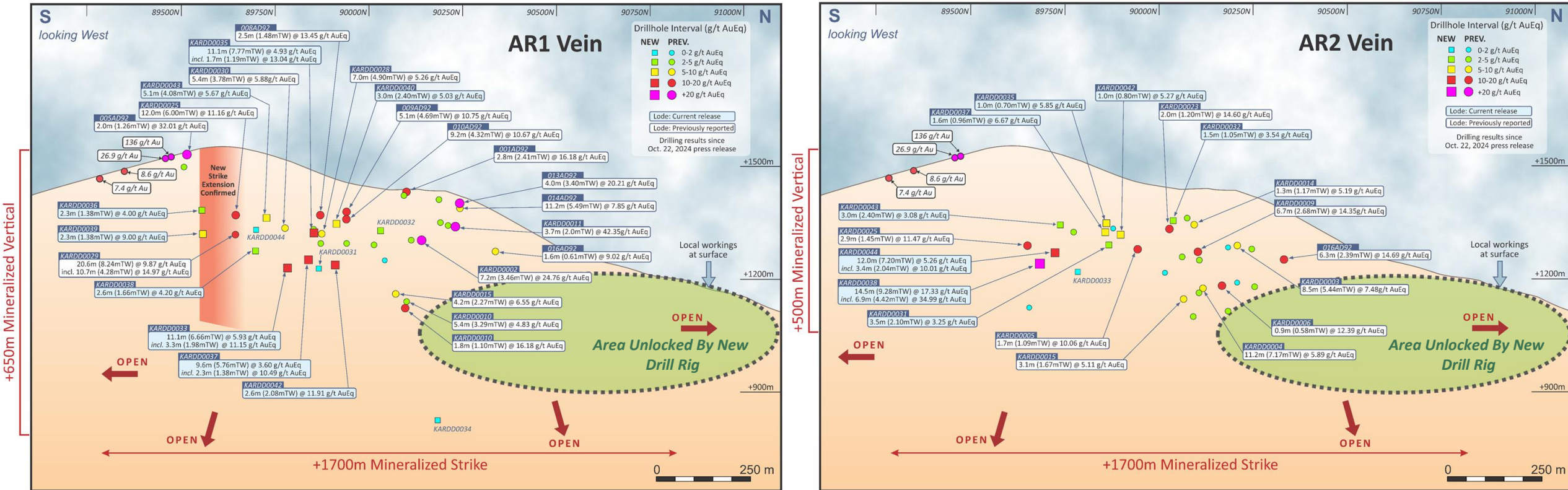
High Priority Exploration Targets: Arakompa and Maniape

Arakompa and Maniape Veins Key Facts

- **Arakompa** – Sparsely drilled, open along strike, at depth and along its width
 - Located ~4.5km from Kainantu process plant, with similar mineralization to the producing high grade Kora and Judd vein systems
 - The target size is very large, with mineralization demonstrated from drill holes, rock samples and surface workings for at least 1.7 km of strike, hosted within an ~150-225 m wide mineralized intense phyllic altered package, and exhibits a vertical extent of +500 m
 - **Maiden resource estimate targeting 2H 2025**
- **Maniape** – ~1100m strike & 220m known vertical
 - 16 holes drilled, including: **49 m at 4 g/t Au (incl. 12.5 m at 8 g/t Au) and 7 m at 22 g/t**
 - Work to date indicates Maniape is similar geologically to Arakompa



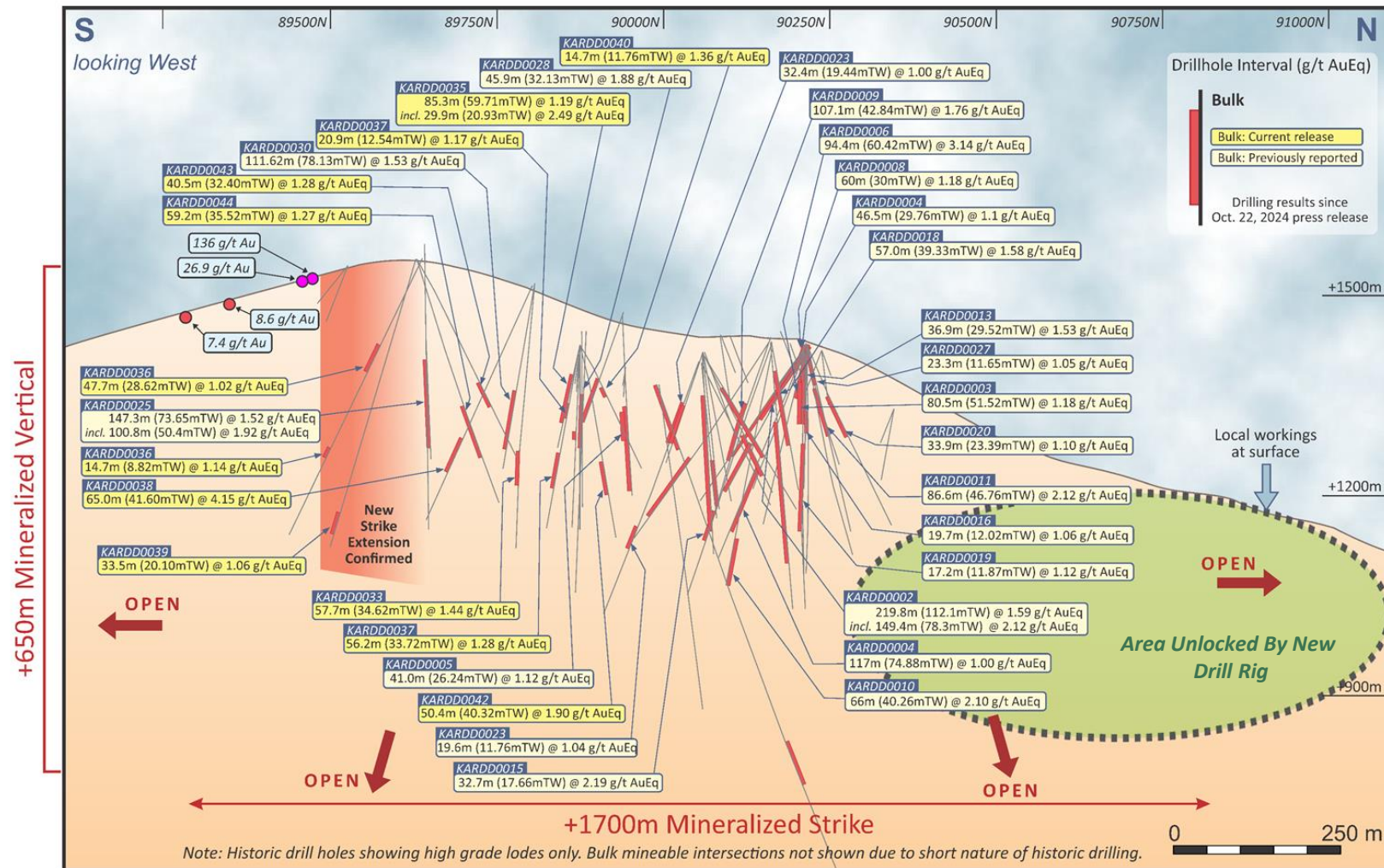
Two Major High-Grade Veins Confirmed to Date – AR1 and AR2



Drilling at Arakompa has confirmed two major sub-parallel veins AR1 and AR2, defined over extensive strike and depth with a substantial average vein thickness of ~3 metres

Both veins are open in multiple directions and we see high potential for underground mining

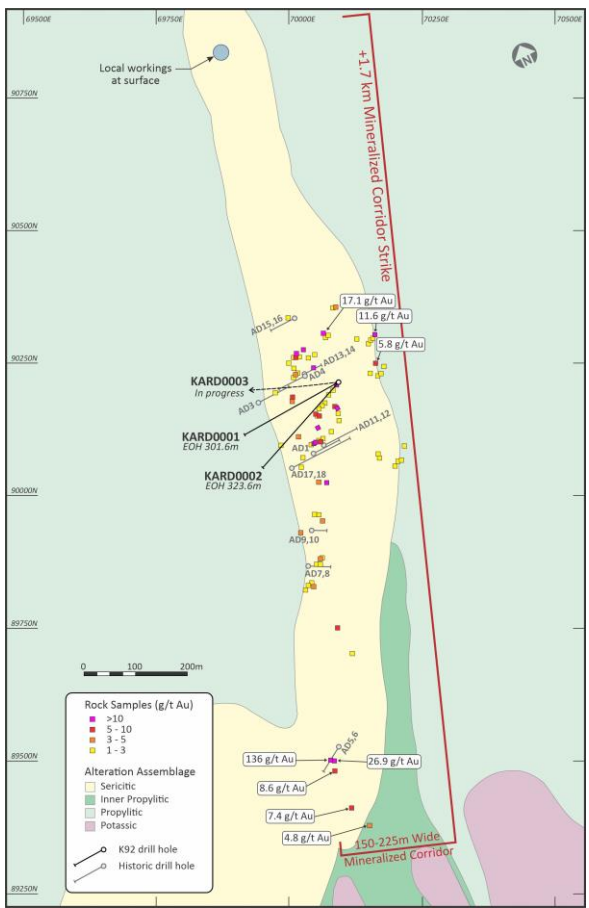
First Program in 32 Years Continues to Define Interpreted Bulk Tonnage Zone



Arakompa Target is Very Large: +1.7km Strike, +650m Vertical and 150-225m Wide Corridor Bulk Open Along Strike, Depth and Width

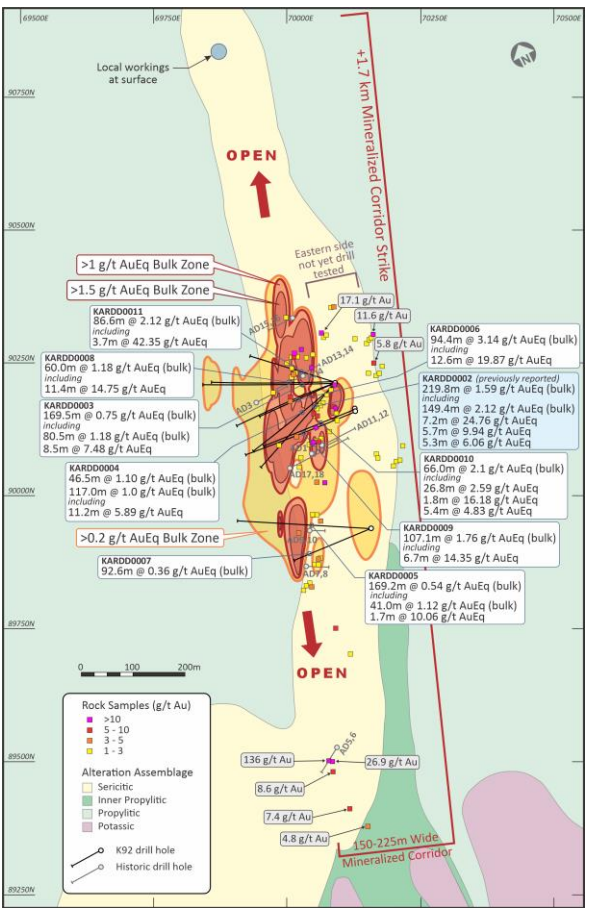
Arakompa is a Growing Very Rapidly

Feb 2024



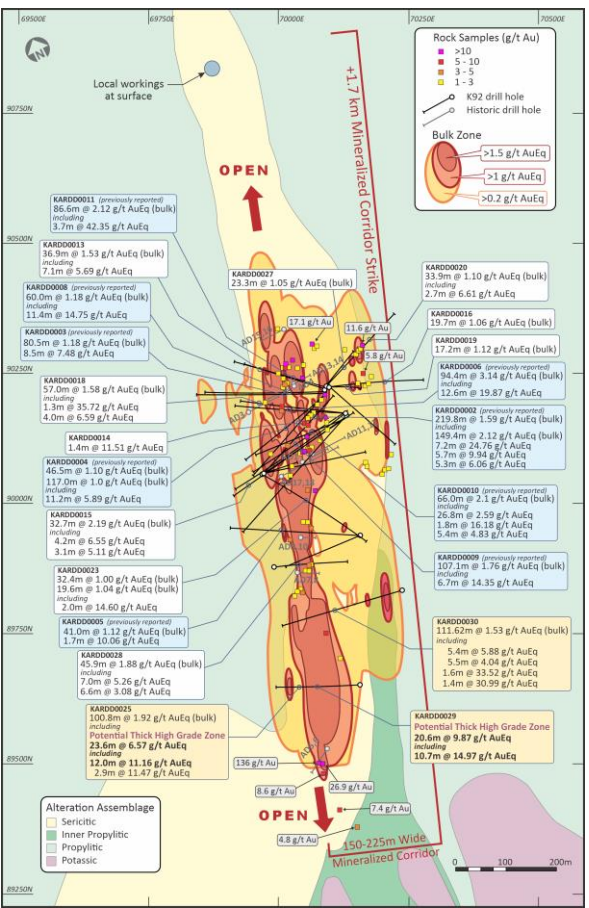
(2 Holes Reported)

June 2024



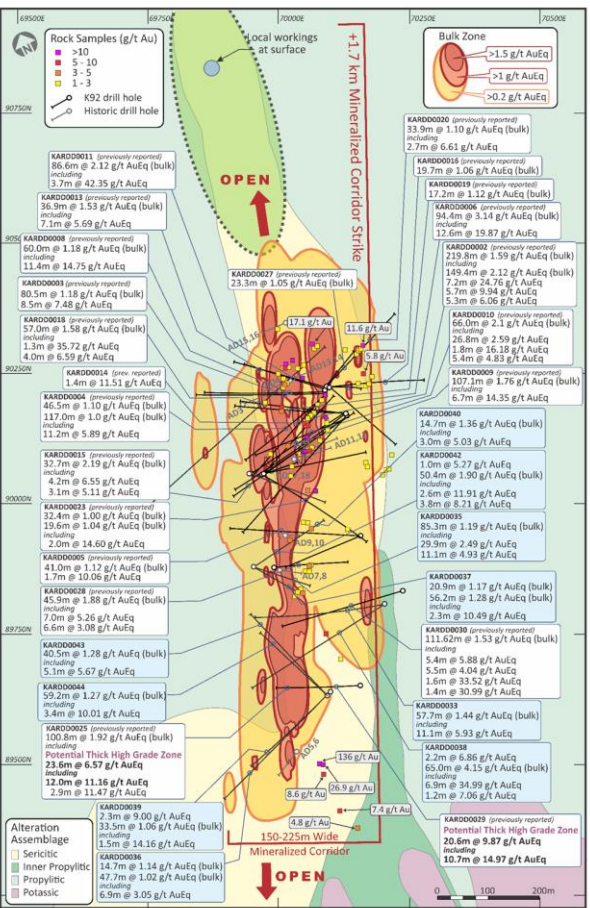
(11 Holes Reported)

Oct 2024



(30 Holes Reported)

Feb 2025

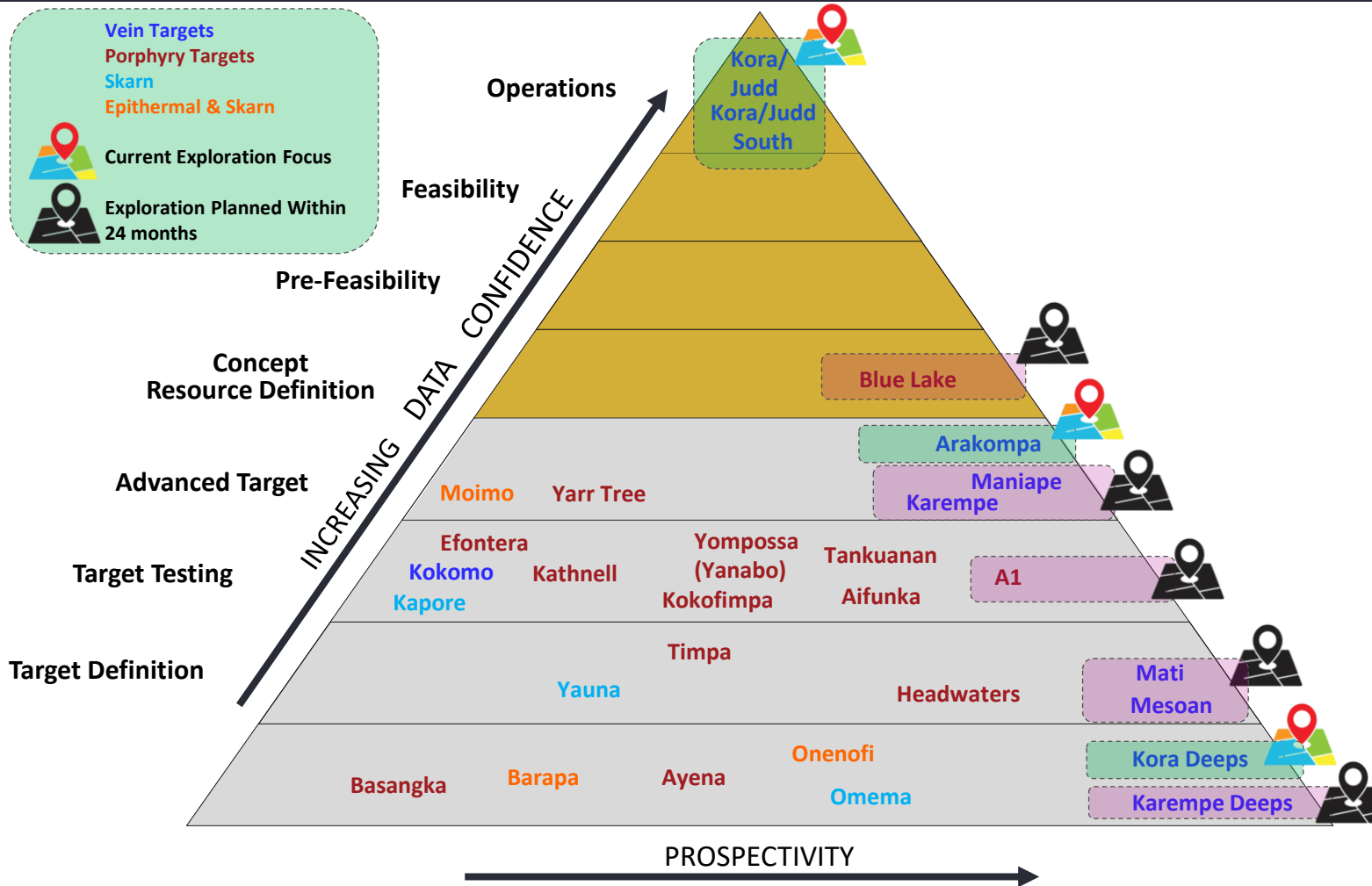


(43 Holes Reported)

Arakompa is rapidly & efficiently growing - only ~50% of strike has been tested. A new heli-supported drill rig will enable access to the northern extension, unlocking significant untested strike potential.

Note: See slide 46 for complete grade information for intersections.

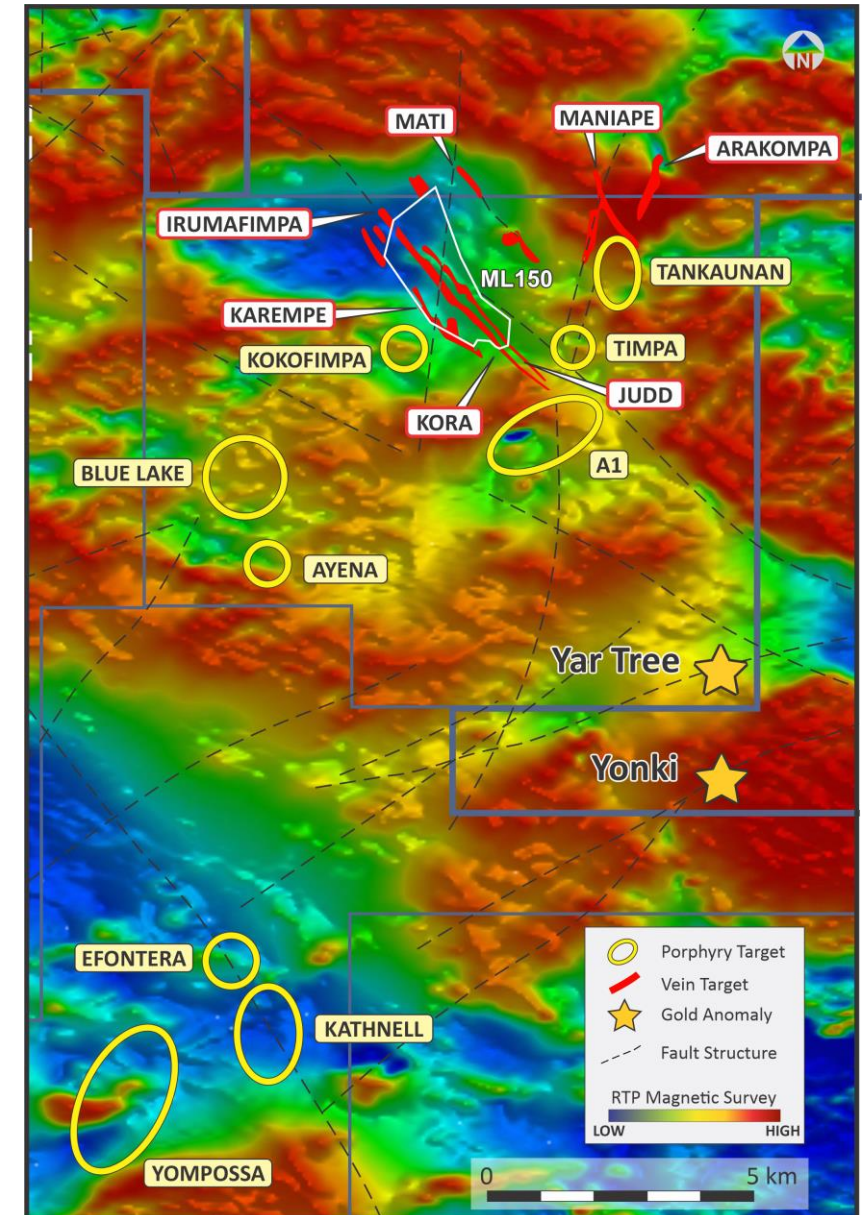
Significant Pipeline of Highly Prospective Exploration Targets



Large underexplored ~830km² land package

Prospective for multiple deposit types with many high priority targets

Potential to Double Exploration Budget to ~\$40m once Stage 3 Delivered





Appendix



Management Team

John Lewins CEO & Director	Mineral engineer with +35yrs of global experience (Africa, Australia, Asia, N. America & former Soviet Union) at project development, operational and corporate level. Former GM of MIM Holdings, MD of Platinum Australia and Executive Director of African Thunder Platinum SA. Became CEO of K92 in Aug 2017; previously COO.
David Medilek President & COO	Mining professional with +17 yrs of mining capital markets, corporate strategy and technical operating experience. Former President and VP Business Development & Investor Relations of K92 Mining, Equity Research Analyst at Macquarie Group Limited, Mining Investment Banker at Cormark Securities Inc. and Mining Engineer at Barrick (Western Australia). Mr. Medilek is a licensed Professional Engineer in BC, Canada and CFA® charterholder*.
Justin Blanchet CFO	Previously CFO of several TSXV-listed mining companies. Mr. Blanchet has 20 yrs of financial reporting, audit, treasury, business development, and regulatory compliance experience in the mining industry and has worked on international projects throughout the world. Mr. Blanchet is a Canadian Chartered Professional Accountant and a U.S. Certified Public Accountant (Washington).
Chris Kinver VP Projects & Engineering	Mining engineer with 20yrs of underground operations and mine development experience in PNG, Australia, South America, Africa and the United Kingdom. Former Project Director Kora Expansion, Mining Manager and Evaluation and Studies Manager at K92. Held roles of Project Manager with OceanaGold, Underground Mine Manager with BHP, Underground Mine Manager with Barrick and Principal Engineer at Wardell Armstrong LLP. Mr. Kinver holds a First Class Western Australian Mine Managers' Certificate and registrations with the Institute of Engineers Australia, The Engineering Institution of Zambia, and Registered Engineers of Tanzania.
Robert Smillie VP Exploration	Mr. Smillie is a geologist with over 35 years of experience specializing in epithermal gold and copper-gold systems across the Asia Pacific. While at Ok Tedi Mining, his team discovered the Townsville project, a major copper-gold find and the company's most significant near-mine discovery in over 30 years. He has led large exploration programs with budgets up to AUD\$25 million and worked with OceanaGold, WMC Resources, Calibre Mining, and others. Mr. Smillie holds an MBA from Victoria University, an MSc and BSc in Geology from Otago University, and is a Fellow of SEG and AusIMM.
Philip Samar VP Government & Community Affairs	Mr. Samar has spent 20 years through to 2018 working for the Mineral Resources Authority (MRA) of Papua New Guinea, the government body responsible for regulating the exploration and mineral sector. In his last six years as Managing Director, Mr. Samar had a significant leadership role within the country and has regularly interacted with multiple mining industry stakeholders including: government, international organizations, landowners and foreign investors.

Board of Directors

Anne Giardini Chair	Over 35 years' experience as a lawyer, senior executive, director, journalist and author, and has held several senior advisory roles. Former General Counsel and President of Weyerhaeuser's Canadian subsidiary. Ms. Giardini currently serves on the boards of Pembina Institute and CMHC and as Chair of the BC Achievement Foundation. Former Chair of the Greater Vancouver Board of Trade and served on numerous boards including Weyerhaeuser, Nevsun Resources, Thompson Creek Metals, HydroOne, and TransLink. In 2016, Ms. Giardini was made an Officer of the Order of Canada and in 2018 she was admitted to the Order of British Columbia.
John Lewins	See Management Team
Cyndi Laval	Lawyer with +25 yrs of experience specializing in areas of mining law, corporate finance, M&A, corporate governance and securities. Currently a Partner in Gowling WLG's Vancouver office. Ms. Laval was also named one of Vancouver's 30 leading lawyers by the National Post and is recognized as a leading lawyer in multiple publications. Prior to joining private law practice, Ms. Laval worked in the TSXV Exchange's policy department.
Graham Wheelock (In Memoriam)	Geologist and mining executive with +40 yrs experience in gold and diamonds, operating in +55 countries, largely with Anglo American and De Beers. Co-founder of Gem Diamonds (LSE), former acting GM at De Beers Namaqualand Mines (S. Africa) in the head office leading the industrial intelligence team for the global mining industry.
Mark Eaton	Experienced investment professional with +20yrs experience in equity capital markets, focused on the resource sector. Held the role of MD Global Mining Sales at CIBC, Manager of US Equity Sales at CIBC, and former Partner and Director of Loewen Ondaatje McCutcheon Ltd. Mr. Eaton is the current Executive Chairman and former CEO of Belo Sun Mining and has served as director or executive of several mining companies.
Saurabh Handa	Chartered Professional Accountant with diverse senior experience in finance, mergers and acquisitions and multi-jurisdictional public company disclosures. Currently Principal of Handa Financial Consulting Inc. Former CFO of Titan Mining Corp., VP, Finance of Imperial Metals Corp., CFO of Meryllion Resources Corp., CFO of Yellowhead Mining Inc., Controller for SouthGobi Resources Ltd. and Senior Staff Accountant at Deloitte and Touche LLP.
Nan Lee	Professional Engineer with over 30 years of experience as a mining and geo-environmental engineer, project manager, senior executive, and advisor in the mining industry. Ms. Lee's experience in the uranium sector includes 15 years as an independent consultant leading environmental assessments and managing preliminary feasibility studies for tailings management facilities and a greenfield mine development proposals. More recently, Ms. Lee was with UEX Corporation as VP of Project Development, providing strategic direction for development of projects and project evaluations for potential acquisitions, in addition to managing economic studies.

2030 GHG Emissions Reduction Target



40%

lower carbon intensity compared
to global average

K92 has set a target to reduce
Scope 1 and Scope 2 emissions
by 25% on a business-as-usual
basis by 2030

**Kainantu has below industry average emissions and we are
committed to further improving our energy and GHG emissions profile further**

Operational Guidance - Investing in Our Major Expansion

Key Figures

	Amount
2025 Production	160,000 to 185,000 oz AuEq
2025 By-product Cash Cost	US\$710 to US\$770/oz Au
2025 By-product AISC	US\$1,460 to US\$1,560/oz Au
2025 Co-product Cash Cost	US\$830 to US\$890/oz AuEq
2025 Co-product AISC	US\$1,490 to US\$1,590/oz AuEq
2025 Exploration	US\$17 to US\$20 million
2024 Growth Capital Spent	US\$102 million
2025 Growth Capital	US\$105 to US\$110 million

2025 delivers a major investment going into the operation to transform Kainantu and K92 into a low-cost, Tier 1 Mid-Tier Producer upon commissioning of the Stage 3 Expansion (commencing in the second half of Q2 2025)

Key Highlights

- **Production Growth:** Production in the second half of 2025 is expected to be the strongest, with operations ramping up ahead of the commissioning and ramp-up of the 1.2 mtpa Stage 3 Expansion process plant, scheduled for the second half of Q2 2025
- **Cost Adjustments:** The moderate increase in 2025 cash costs and AISC is aligned with the higher sustaining capital Updated Integrated Development Plan, in addition to a moderate amount of sustaining capital that has shifted from 2024 to 2025
 - Very significant reduction in cash costs and AISC expected in H2 2025 and beyond upon commissioning of the Stage 3 Expansion
- **Growth Capital:** Total growth capital for the Stage 3 and 4 Expansions of \$216 million
 - By the end of April 2025, 77% of the Stage 3 and 4 Expansion growth capital has been either spent or committed and the process plant construction is 87% complete.
 - Largest package, the Stage 3 Process Plant, was awarded on a lump-sum fixed price basis to GR Engineering, significantly de-risking the project (see July 24, 2023 press release)
 - The remaining major package, the Paste Fill Plant, is well advanced with long-lead items ordered, bulk earthworks underway, front-end engineering and design complete, detailed engineering by GR Engineering nearly complete and Quattro Engineering well advanced, underground plant construction contract self-awarded and remaining surface construction contracts set to be awarded in Q2 2025

Kora Deposit Overview & Mining Conditions Summary

Deposit:	Intermediate Sulphidation Multiple sub-vertical Au-Cu-Ag sulphide veins Focus is on the K1 and K2 veins, with the system also hosting other veins and link structures	
AuEq Reserve Grade:	✓	8.6g/t – 6.6g/t Au, 19g/t Ag, 1.1% Cu (3.5g/t cut-off) with multiple higher-grade zones (+20g/t)
Thickness:	✓	~3-5m average range
Orientation:	✓	Sub-Vertical
Continuity:	✓	Highly Continuous
Size Potential:	✓	+1.5km strike (open) by +1km vertical (open)
Access:	✓	Incline ramp access (deposit at higher elevation than portal), providing significant operational efficiencies (dewatering and materials transport) through leveraging gravity
Geotech:	✓	Competent – Amenable to long hole on both K1 and K2 Veins

**Kora has the ‘right ingredients’
for an efficient and productive underground mine**

Judd Deposit Overview & Mining Conditions Summary

Deposit:	Intermediate Sulphidation Multiple sub-vertical Au-Cu-Ag sulphide veins, located ~150-200m east of Kora Focus is on the J1 vein, with the system also hosting at least three other veins	
AuEq Reserve Grade:	✓	8.1g/t – 7.1g/t Au, 14g/t Ag, 0.5% Cu (3.5g/t cut-off) with higher grade zones (+15g/t)
Thickness:	✓	~3-5m average range
Orientation:	✓	Sub-Vertical
Continuity:	✓	Highly Continuous
Size Potential:	✓	Open in all directions – high grade underground was discovered recently in Q4 2020 and limited exploration completed to date
Access:	✓	Leverages Kora's infrastructure resulting in limited waste development required to access the deposit. Like Kora, deposit is above main infrastructure, providing significant operational efficiencies (dewatering and materials transport) through leveraging gravity
Geotech:	✓	Competent – Amenable to highly efficient long hole on J1

Solid Performance to Date from Production Stoping at Judd

Kora and Judd Independent Reserve Estimate

Kora and Judd Deposit Reserve Summary (January/2024)

	Tonnes	Gold		Silver		Copper		Gold Equivalent	
	mt	g/t	moz	g/t	moz	%	kt	g/t	moz
<u>Kora Deposit</u>									
Proven	2.95	7.4	0.70	19	1.9	1.1	31	9.4	0.89
Probable	2.52	5.7	0.46	19	1.6	1.0	26	7.6	0.61
Proven & Probable	5.47	6.6	1.16	19	3.4	1.1	57	8.6	1.50
<u>Judd Deposit</u>									
Proven	0.24	8.3	0.06	17	0.1	0.6	1	9.4	0.07
Probable	0.47	6.5	0.10	13	0.2	0.5	2	7.5	0.11
Proven & Probable	0.71	7.1	0.16	14	0.3	0.5	4	8.1	0.18
<u>Consolidated</u>									
Total Proven	3.19	7.5	0.77	19	2.0	1.0	33	9.4	0.96
Total Probable	2.99	5.8	0.56	18	1.8	1.0	28	7.6	0.73
Total Proven & Probable	6.18	6.7	1.32	19	3.7	1.0	61	8.5	1.69

- The long-term metal prices used for calculating the financial analysis are USD \$1,900/oz gold, USD \$4.50/lb Copper, USD \$25/oz Silver.
- Gold Equivalents are calculated as $AuEq = Au \text{ g/t} + Cu \% * 1.62404 + Ag \text{ g/t} * 0.01316$, based on commodity pricing. Metal payabilities and recoveries are not incorporated into this formula.
- A minimum mining width of 3.0 m has been applied for stoping, inclusive of a 1.0 m dilution skin at contained Mineral Resource grade.
- In addition to the 1.0 m dilution skin, dilution of 5% has been added for Avoca mined stopes and 2.5% for long hole stoping with paste fill. Where a stope is within 5.0 m proximity of the HW or FW of the fault gouge, an additional 1.0m of dilution was added at a grade averaging 1.42 g/t AuEq. This results in a total average dilution of 27.8%.
- Mining recoveries of 90% have been applied to Avoca mined stopes, and 95% for long hole stoping with paste fill.
- A cut-off grade of 3.5 g/t AuEq was used to define stoping blocks. Stope shapes with uneconomic development were excluded. The cut-off grade takes into account site operating costs, G&A costs, sustaining capital costs and relevant processing and revenue inputs.
- Measured Mineral Resources were used to report Proven Mineral Reserves.
- Indicated Mineral Resources were used to report Probable Mineral Reserves. No Measured Mineral Resources were used to report Probable Mineral Reserves.
- Tonnage and grade estimates include dilution and recovery allowance.
- The Mineral Reserves reported are not added to Mineral Resources.

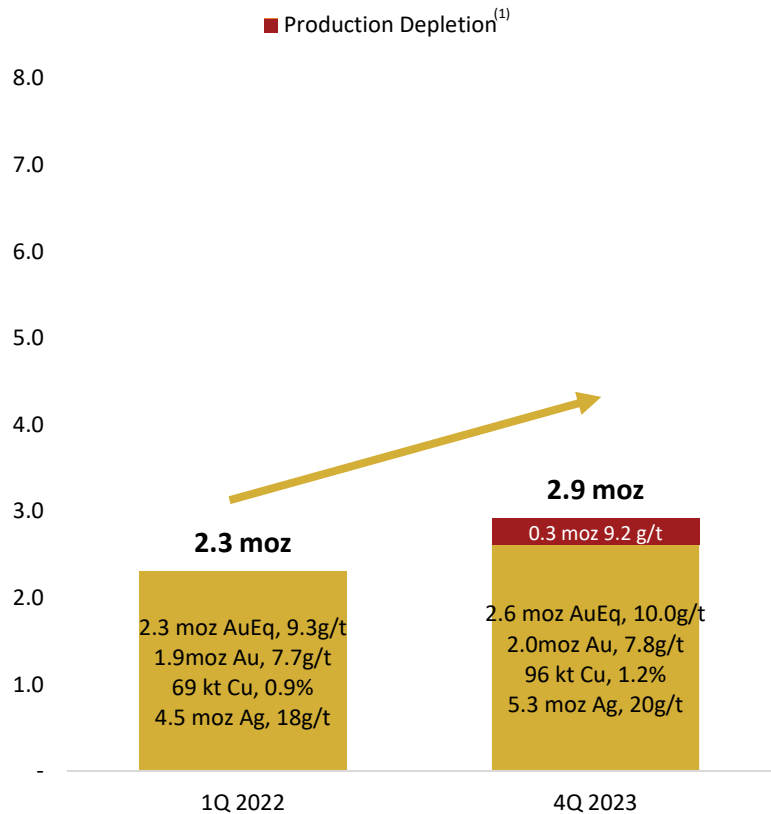
Kainantu Consolidated NI 43-101 Resources

Kora and Judd Deposit Resource Summary (September/2023)

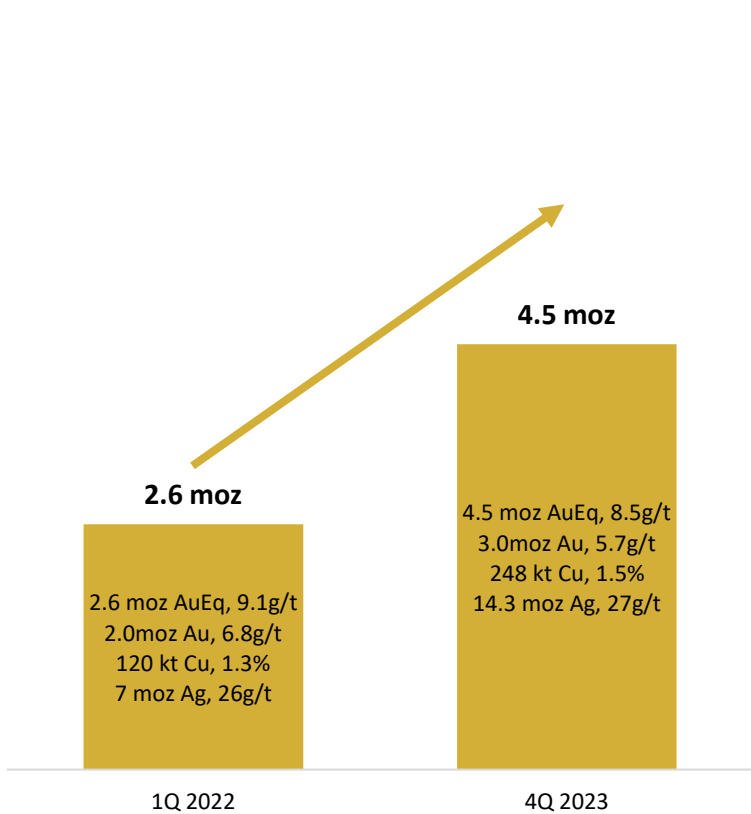
	Tonnes	Gold		Silver		Copper		Gold Equivalent	
	mt	g/t	moz	g/t	moz	%	kt	g/t	moz
<u>Kora Deposit</u>									
Measured	3.7	8.7	1.0	21	2.5	1.2	45	11.0	1.3
Indicated	3.1	7.0	0.7	22	2.2	1.3	41	9.4	1.0
Measured & Indicated	6.9	7.9	1.8	21	4.7	1.3	86	10.2	2.3
Inferred	14.3	5.6	2.6	29	13.2	1.6	231	8.6	3.9
<u>Judd Deposit</u>									
Measured	0.4	9.1	0.1	23	0.2	0.8	3	10.6	0.1
Indicated	0.8	6.4	0.2	16	0.4	0.7	6	7.8	0.2
Measured & Indicated	1.2	7.2	0.3	17	0.7	0.8	9	8.7	0.4
Inferred	2.3	6.3	0.5	16	1.1	0.8	17	7.7	0.6
<u>Consolidated</u>									
Total Measured	4.1	8.8	1.2	20	2.7	1.2	48	10.9	1.5
Total Indicated	4.0	6.9	0.9	21	2.6	1.2	47	9.1	1.2
Total Measured & Indicated	8.1	7.8	2.0	21	5.3	1.2	96	10.0	2.6
Total Inferred	16.5	5.7	3.0	27	14.3	1.5	248	8.5	4.5

Efficient and Systematic Exploration – Kora and Judd

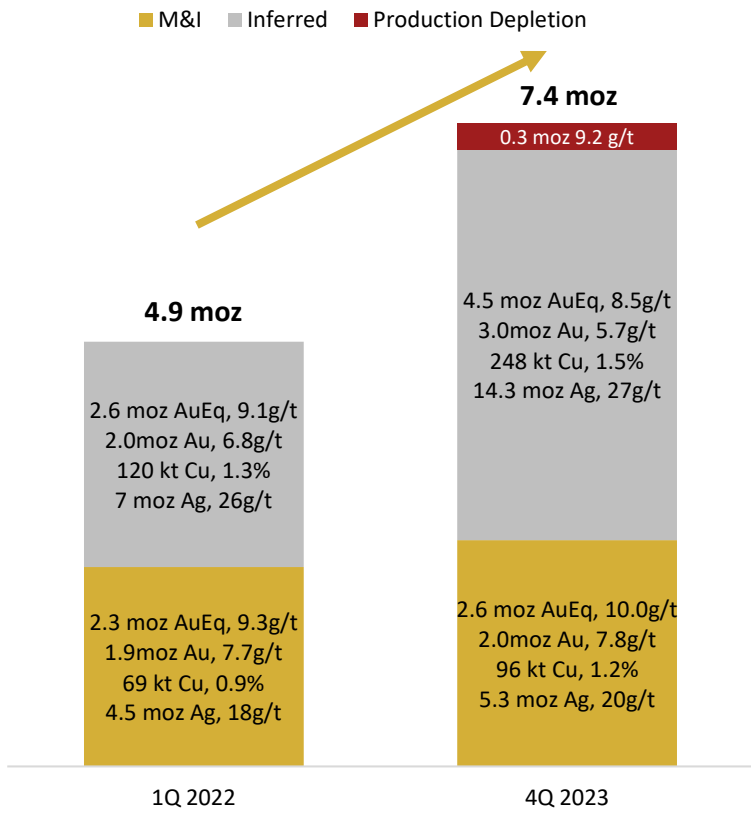
M&I – Kora and Judd (moz AuEq)



Inferred – Kora and Judd (moz AuEq)



Total – Kora and Judd (moz AuEq)



**K92 Has Successfully Executed on A Systematic Exploration Program
Significantly Growing the Resource Base and Ramping Exploration
While Keeping Discovery Costs Low at <US\$7.5/oz AuEq**

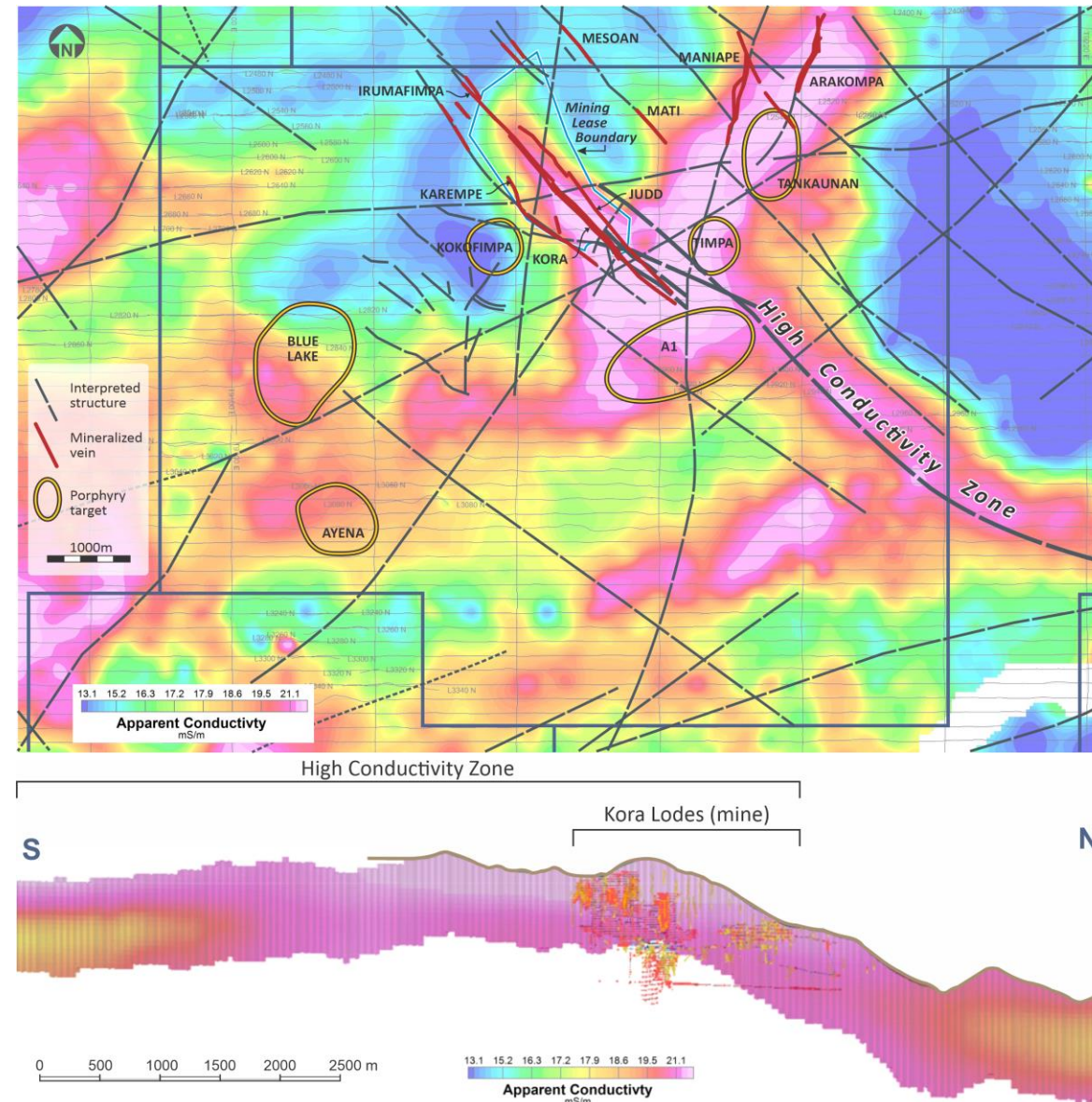
Note (1): Production depletion allocated entirely to M&I category for illustrative purposes.
Kora and Judd resource estimates - refer to technical report dated November 28, 2024 and titled, "Independent Technical Report, Kainantu Gold Mine, Updated Integrated Development Plan, Kainantu Project, Papua New Guinea".

Airborne Geophysics Identifies Many New Targets

Key Facts

- Advanced MobileMT deep penetrating airborne geophysics flown over the entire ~830 km² land package
- First major geophysics program completed on property in +10 years
- **Results demonstrate an extensive untested potential strike length to Kora-Kora South and Judd-Judd South vein systems beyond the A1 porphyry for several kilometres to the SE.**
 - This is demarcated via a High Conductivity Zone
- Results also correlated well with other known mineral deposits and conductive bodies
- Multiple new vein and porphyry targets on all licenses have also been identified.

Geophysics has outlined the potential to extend Kora-Kora South & Judd-Judd South for kilometres



K92
MINING INC.
TSX: KNT
OTCQX: KNTNF



43

Blue Lake Porphyry Project – 14.6 moz Maiden Resource (August 2022)

Large 14.6 moz AuEq
Inferred Resource

Nearly every hole hit – Discovery Cost of
~\$650/oz AuEq per m or <\$1/oz AuEq

In-pit resource and
higher grade core open at depth

In Papua New Guinea, Porphyries Tend
to Cluster – Multiple Targets Nearby

Blue Lake Resource Summary (August 2022)

	Tonnes	Gold		Silver		Copper		Gold Equivalent	
	mt	g/t	moz	g/t	moz	%	mt	g/t	moz
Blue Lake									
Inferred	686	0.19	4.2	2.4	53.6	0.21	1.4	0.66	14.6

- Estimates are based on Technical Report titled, "Independent Technical Report, Mineral Resource Estimate Blue Lake Porphyry, Kainantu Project, Papua New Guinea".
- The Independent and Qualified Person responsible for the mineral resource estimate is Simon Tear, P.Geo. of H & S Consultants Pty. Ltd., Sydney, Australia, and the effective date of the Mineral Resource is 1st August, 2022.
- Mineral resources are not mineral reserves and do not have demonstrated economic viability.
- Resources were compiled at 0.1, 0.2, 0.3, 0.4, 0.5, 0.6 g/t AuEq cut-off grades.
- Density was based on 2,473 measured density data recordings (weighed core trays and measured core) which were composited and subsequently modelled unconstrained using Ordinary Kriging. Reported tonnage and grade figures are rounded from raw estimates to reflect the order of accuracy of the estimate.
- Minor variations may occur during the addition of rounded numbers.
- Estimations used metric units (metres, tonnes and g/t)
- Gold equivalents are calculated as $AuEq = Au \text{ g/t} + Cu\% * 2.0629 + Ag \text{ g/t} * 0.0125$. Gold price US\$1,600/oz; Silver US\$20/oz; Copper US\$3.75/lb. Metal recoveries are incorporated in the formula and are Au 67%, Ag 67% and copper 86% respectively.

Kora and Judd Highlight Intersections From Presentation Images

Drill Hole ID	Interval (m)	True width (m)	Gold g/t	Silver g/t	Copper %	Gold Eq
KUDD0053	78.5	11.86	24.94	116	0.38	27.03
KUDD0056	34	10.2	5.45	130	0.65	8.14
KUDD0002	35.9	23.34	1.42	47	2.48	5.98
KUDD0038	14	8.82	0.91	35	2.58	5.49
KUDD0058	51	29.58	0.82	48	3.58	7.04
KMDD0754	9.35	5.35	11.51	12	1.27	13.7
KUDD0035	50.05	31.53	1.6	34	2.01	5.25
KUDD0033	27.9	19.25	4.65	76	3.03	10.48
KMDD0714	9.5	8.3	8.05	5	0.89	9.53
KMDD0705	6.6	5.38	7.27	12	2.08	10.76
KMDD0753	10.6	5.63	27.85	37	3.91	34.57
KMDD0705	5.3	4.32	24.99	3	0.4	25.67
KMDD0702	4.37	3.5	32.16	10	0.61	33.27
KMDD0712	7.25	6.98	3.05	77	0.98	5.58
KMDD0698A	8.15	5.92	24	16	0.18	24.49
KMDD0495	30.55	11.8	4.15	78	4.79	12.82
KMDD0752	13.5	13.42	14.93	199	1	19.02
KMDD0751	9.5	9.47	2.26	42	2.63	7
KMDD0709	12.14	9.18	4.73	7	0.72	5.97
KMDD0746	14.4	13.5	9.58	54	1.15	12.09
KMDD0709	16.1	12.26	11.48	40	2.28	15.63
KMDD0692	8.9	8.13	3.73	81	2.41	8.6
KMDD0743	14.05	13.1	3.14	56	1.07	5.56
KMDD0719	5.76	5.3	6.07	25	1.3	8.46
KMDD0718	4.3	3.98	4.5	16	1.74	7.49
KMDD0718	8.8	8.16	0.84	31	2.56	5.33
KMDD0717	6.5	6.38	3.29	22	1.23	5.55
KMDD0751	4.9	4.88	2.07	39	1.56	5.05
KMDD0209	13.38	2.82	2.93	50	1.69	6.03
KMDD0752	13.5	13.42	14.93	199	1	19.02
KMDD0709	12.14	9.18	4.73	7	0.72	5.97
KMDD0709	16.1	12.26	11.48	40	2.28	15.63
KMDD0746	14.4	13.5	9.58	54	1.15	12.09
KMDD0683	10.6	8.51	11	65	1.22	13.75
KMDD0675	10.15	6.04	6.72	22	1.32	9.08
KMDD0675	16.7	13.07	4.29	66	1.57	7.59
KMDD0743	14.05	13.1	3.14	56	1.07	5.56
KMDD0692	8.9	8.13	3.73	81	2.41	8.6
KMDD0712	7.25	6.98	3.05	77	0.98	5.58
KMDD0209	23.78	3.79	1.7	35	1.97	5.05
KMDD0742	3.88	3.77	5.62	34	0.96	7.59
KMDD0741	6.15	5.84	3.25	23	1.77	6.38
KMDD0715	6	5.91	4.75	49	2.72	9.73
KMDD0670	6.9	6.12	4.19	6	0.71	5.37
KMDD0133A	25.1	8.55	4.27	22	0.64	5.53
KMDD0133	31.43	10.7	3.56	15	0.68	4.8

Drill Hole ID	Interval (m)	True width (m)	Gold g/t	Silver g/t	Copper %	Gold Eq
KUDD0038	28.7	18.08	2.85	25	0.85	4.53
KUDD0023	19.9	14.1	2.69	22	0.58	3.89
KUDD0017	25	17.69	18.53	27	0.64	20.89
KUDD0040	22	14.3	2.05	21	1.75	5.14
KUDD0040	57.8	37.57	1.16	12	0.89	2.73
KUDD0001	66.55	43.26	3.65	9	0.78	5.02
KUDD0032	30.3	16.06	3.49	27	1.43	6.13
KUDD0040	2.4	1.56	344.4	75	0.02	345.36
JDD0258	3.95	2.45	50.06	24	0.81	51.67
JDD0263	7.38	5.84	6.87	14	0.38	7.66
JDD0265	2.2	1.51	6.39	78	4.91	15.24
JDD0251	5	3.08	177.69	2	0.54	178.59
KMDD0729	1.3	1.12	16.77	52	3.69	23.33
JDD0261	1.7	1.17	21.63	42	0.65	23.2
JDD0266	3.47	2.09	11.41	9	0.22	11.88

Arakompa Highlight Intersections From Presentation Images

Hole_ID	From (m)	To (m)	Interval (m)	True width (m)	Gold g/t	Silver g/t	Copper %	Gold Eq
KARDD0002	5.2	225	219.8	112.14	1.45	3	0.07	1.59
KARDD0002	5.2	154.6	149.4	78.35	1.93	3	0.09	2.12
KARDD0002	143.6	150.8	7.2	3.46	24.44	13	0.1	24.76
KARDD0003	89	169.5	80.5	51.52	1.09	3	0.03	1.18
KARDD0003	161	169.5	8.5	5.44	7.23	12	0.06	7.48
KARDD0004	0	46.5	46.5	29.76	0.96	7	0.03	1.1
KARDD0004	215	332	117	74.88	0.89	3	0.04	1
KARDD0004	281.6	292.8	11.2	7.17	5.64	6	0.11	5.89
KARDD0005	207	248	41	26.24	0.96	4	0.07	1.12
KARDD0005	245.3	247	1.7	1.09	9.9	11	0.01	10.06
KARDD0006	0	94.4	94.4	60.42	3.06	3	0.02	3.14
KARDD0006	5	17.6	12.6	8.06	19.79	3	0.02	19.87
KARDD0006	265.9	266.8	0.9	0.58	12.21	12	0.02	12.39
KARDD0008	0	60	60	30	1.06	6	0.03	1.18
KARDD0009	132.9	240	107.1	42.84	1.59	3	0.09	1.76
KARDD0009	210.5	217.2	6.7	2.68	14.19	9	0.03	14.35
KARDD0010	320	386	66	40.26	1.86	4	0.12	2.1
KARDD0010	325.7	331.1	5.4	3.29	4.62	5	0.1	4.83
KARDD0010	344.2	346	1.8	1.1	15.37	21	0.35	16.18
KARDD0010	357.5	384.3	26.8	16.35	2.17	7	0.21	2.59
KARDD0011	98.8	185.4	86.6	46.76	2.03	1	0.05	2.12
KARDD0011	98.8	102.5	3.7	2	40.84	17	0.82	42.35
KARDD0013	0	36.9	36.9	29.52	1.4	3	0.04	1.53
KARDD0013	12.9	20	7.1	5.68	5.47	13	0.04	5.69
KARDD0014	74.2	75.5	1.3	1.17	2.36	50	1.37	5.19
KARDD0014	218	219.4	1.4	1.26	11.06	19	0.13	11.51
KARDD0015	312.5	345.2	32.7	17.66	1.97	4	0.1	2.19
KARDD0015	318.2	322.4	4.2	2.27	6.08	12	0.2	6.55
KARDD0015	340	343.1	3.1	1.67	5.07	2	0.01	5.11
KARDD0016	101.5	121.2	19.7	12.02	0.73	11	0.11	1.06
KARDD0018	66.8	123.8	57	39.33	1.47	5	0.02	1.58
KARDD0018	66.8	70.8	4	2.76	6.15	30	0.04	6.59
KARDD0018	122.5	123.8	1.3	0.9	35.29	17	0.14	35.72
KARDD0019	255.7	272.9	17.2	11.87	0.67	15	0.17	1.12
KARDD0020	116.1	150	33.9	23.39	0.73	22	0.06	1.1
KARDD0020	148.3	151	2.7	1.86	4.28	175	0.09	6.61
KARDD0023	78	110.4	32.4	19.44	0.83	5	0.06	1
KARDD0023	328	347.6	19.6	11.76	0.72	8	0.14	1.04
KARDD0023	78	78.8	2	1.2	12.44	60	0.88	14.6
KARDD0025	191	299.8	100.8	50.4	1.71	3	0.1	1.92
KARDD0025	191	214.6	23.6	11.8	5.89	8	0.35	6.57
KARDD0025	199	211	12	6	10.49	11	0.33	11.16
KARDD0025	199	200.4	1.4	0.7	65.62	64	1.01	68.05
KARDD0025	296.9	299.8	2.9	1.45	11.26	9	0.06	11.47
KARDD0027	0	23.3	23.3	11.65	0.98	2	0.02	1.05
KARDD0028	83	128.9	45.9	32.13	1.72	5	0.06	1.88
KARDD0028	101.2	107.8	6.6	4.62	2.95	3	0.05	3.08
KARDD0028	113	120	7	4.9	5.04	10	0.06	5.26
KARDD0029	240.6	261.2	20.6	8.24	8.9	29	0.38	9.87
KARDD0029	240.6	251.3	10.7	4.28	13.81	25	0.53	14.97
KARDD0030	216.5	328.12	111.62	78.13	1.35	4	0.08	1.53
KARDD0030	46.5	47.9	1.4	0.98	30.77	13	0.04	30.99
KARDD0030	233.1	238.5	5.4	3.78	5.01	15	0.43	5.88

Hole_ID	From (m)	To (m)	Interval (m)	True width (m)	Gold g/t	Silver g/t	Copper %	Gold Eq
KARDD0030	255.57	261.1	5.53	3.87	3.38	13	0.31	4.04
KARDD0030	326.5	328.12	1.62	1.13	33.38	4	0.05	33.52
KARDD0031	133	136.5	3.5	2.1	3.15	4	0.03	3.25
KARDD0033	295.6	353.3	57.7	34.62	1.28	3	0.08	1.44
KARDD0033	332.6	343.7	11.1	6.66	5.37	8	0.29	5.93
KARDD0033	332.6	335.9	3.3	1.98	10.92	3	0.12	11.15
KARDD0035	58.5	143.8	85.3	59.71	1	4	0.08	1.19
KARDD0035	93.2	123.1	29.9	20.93	2.09	7	0.2	2.49
KARDD0035	93.2	94.2	1	0.7	1	48	2.72	5.85
KARDD0035	112	123.1	11.1	7.77	4.5	10	0.19	4.93
KARDD0035	120	121.7	1.7	1.19	12.55	15	0.19	13.04
KARDD0036	158.3	206	47.7	28.62	0.74	4	0.14	1.02
KARDD0036	345	359.7	14.7	8.82	0.82	11	0.11	1.14
KARDD0036	158.3	165.2	6.9	4.14	2.43	11	0.31	3.05
KARDD0036	203.7	206	2.3	1.38	2.16	18	1.04	4
KARDD0037	96.3	117.2	20.9	12.54	1.08	2	0.04	1.17
KARDD0037	177	233.2	56.2	33.72	0.96	7	0.15	1.28
KARDD0037	110.5	112.1	1.6	0.96	6.44	9	0.07	6.67
KARDD0037	182.5	192.1	9.6	5.76	2.69	11	0.49	3.6
KARDD0037	185.1	187.4	2.3	1.38	7.92	24	1.46	10.49
KARDD0038	304.6	369.6	65	41.6	4.04	3	0.05	4.15
KARDD0038	51.6	53.8	2.2	1.41	6.43	17	0.13	6.86
KARDD0038	311	313.6	2.6	1.66	3.44	20	0.32	4.2
KARDD0038	355.1	369.6	14.5	9.28	17.17	4	0.07	17.33
KARDD0038	355.1	362	6.9	4.42	34.73	7	0.11	34.99
KARDD0038	368.4	369.6	1.2	0.77	6.9	4	0.07	7.06
KARDD0039	416	449.5	33.5	20.1	0.85	5	0.09	1.06
KARDD0039	253.5	255.8	2.3	1.38	7.55	23	0.74	9
KARDD0039	448	449.5	1.5	0.9	13.44	33	0.17	14.16
KARDD0040	87.8	102.5	14.7	11.76	1.18	4	0.08	1.36
KARDD0040	99.5	102.5	3	2.4	4.78	6	0.1	5.03
KARDD0040	161.4	162.6	1.2	0.96	4.47	2	0.03	4.53
KARDD0042	185.9	236.3	50.4	40.32	1.58	6	0.15	1.9
KARDD0042	111.3	112.3	1	0.8	5.14	6	0.03	5.27
KARDD0042	191.4	194	2.6	2.08	9.06	41	1.48	11.91
KARDD0042	232.5	236.3	3.8	3.04	7.65	25	0.15	8.21
KARDD0043	227	267.5	40.5	32.4	1.2	3	0.03	1.28
KARDD0043	230.2	235.3	5.1	4.08	5.38	13	0.07	5.67
KARDD0043	257.8	260.8	3	2.4	2.96	3	0.05	3.08

K92

MINING INC.

John Lewins
CEO & Director
Contact:
David Medilek, P.Eng., CFA
President & COO

E-mail: dmedilek@k92mining.com
Phone: +1 (604) 416 4445

